



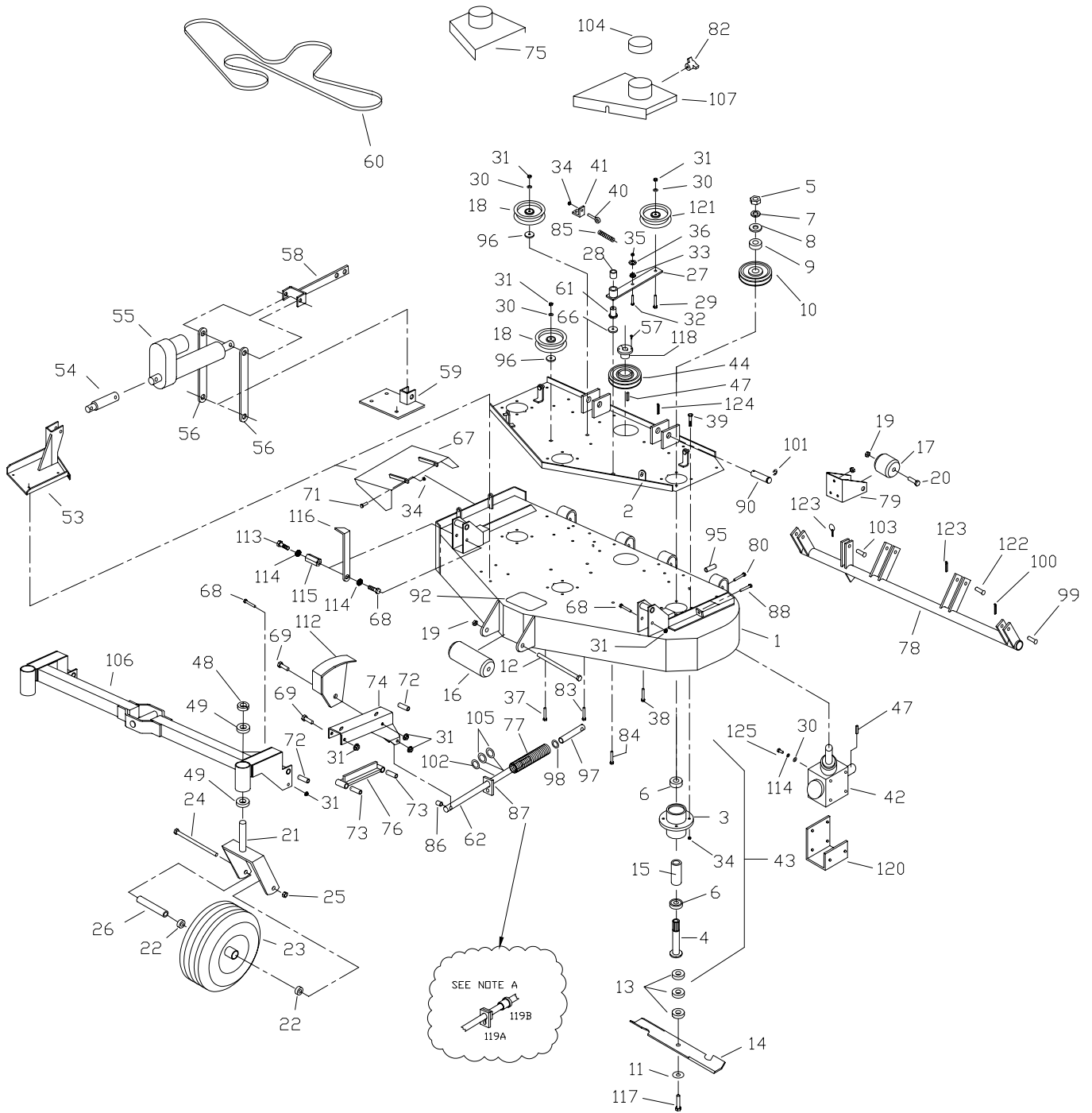
72K850ZP

**PARTS
MANUAL**



**72" MID-CUT
GAS ENGINE
OPTION
SECTION**

72" MID-CUT DECK ASSEMBLY



72" Mid-Cut Deck Assembly

| # | PART NO. | QTY | DESCRIPTION |
|-----|----------|-----|-------------------------------|
| 1 | 582096 | 1 | 72" MC DECK WELDMENT |
| 2 | 582098 | 1 | 72" DECK CHANNEL |
| 3 | 583111 | 3 | SPINDLE HOUSING |
| 4 | 583112 | 3 | SPINDLE SHAFT |
| 5 | 104511 | 3 | 3/4"-16 HEX NUT |
| 6 | 363350 | 6 | BEARING - BLADE SPINDLE |
| 7 | 105010 | 3 | 3/4" LOCK WASHER |
| 8 | 105269 | 3 | 3/4" SAE FLAT WASHER |
| 9 | 583110 | 3 | PULLEY SPACER |
| 10 | 583107 | 3 | PULLEY - SPINDLE 5 3/4" |
| 11 | 583108 | 3 | 5/8" SPRING DISC WASHER |
| 12 | 100351 | 1 | 5/8"-11 X 8 1/2" HEX BOLT |
| 13 | 583109 | 9 | BLADE SPACER |
| 14 | 583287 | 3 | 25" OFFSET BLADE |
| 15 | 583113 | 3 | BEARING SPACER TUBE |
| 16 | 603023 | 1 | ANTI-SCALP ROLLER |
| 17 | 523084 | 2 | REAR DECK ROLLER |
| 18 | 583162 | 2 | 6" FLAT IDLER |
| 19 | 104261 | 3 | 5/8"-11 NYLOC NUT |
| 20 | 100346 | 2 | 5/8"-11 X 4 1/2" HEX BOLT |
| 21 | 822088 | 2 | WIDE TAIL WHEEL STRUT |
| 22 | 363187 | 4 | 1" BEARING |
| 23 | 823220 | 2 | WIDE TAIL WHEEL (COMPLETE) |
| 23A | 823339 | X | TIRE (13 X 6.5 X 6) |
| 23B | 823338 | X | FRONT RIM W/ VALVESTEM |
| 24 | 100352 | 2 | 5/8"-11 X 9" HEX BOLT |
| 25 | 104261 | 2 | 5/8"-11 NYLOC NUT |
| 26 | 823245 | 2 | AXLE TUBE (WTW) |
| 27 | 822144 | 1 | DECK IDLER ARM W/BUSHING |
| 28 | 363007 | 1 | 3/4" FLANGE BUSHING |
| 29 | 107511 | 1 | 3/8"-16 X 2" CARRIAGE BOLT |
| 30 | 105260 | 8 | 3/8" FLAT WASHER |
| 31 | 104257 | 16 | 3/8"-16 NYLOC NUT |
| 32 | 100275 | 1 | 5/16"-18 X 1 1/2" HEX BOLT |
| 33 | 109001 | 2 | 5/16"-18 WHIZLOCK NUT |
| 34 | 104256 | 36 | 5/16"-18 NYLOC NUT |
| 35 | 109007 | 2 | 3/8"-16 WHIZLOCK NUT |
| 36 | 105258 | 9 | 5/16" FLAT WASHER |
| 37 | 107503 | 10 | 5/16"-18 X 3/4" CARRIAGE BOLT |
| 38 | 107509 | 5 | 5/16"-18 X 1" CARRIAGE BOLT |
| 39 | 100274 | 12 | 5/16"-18 X 1 1/4" HEX BOLT |
| 40 | 363080 | 1 | EYEBOLT - RIGHT |
| 41 | 523094 | 1 | SPRING MOUNT - DECK |
| 42 | 583166 | 1 | GEAR BOX LARGE |
| 43 | 583106 | 3 | BLADE SPINDLE ASSY |
| 44 | 583447 | 1 | 6" TAPER LOCK SHEAVE |
| 46 | 105005 | 4 | 5/16" LOCK WASHER |
| 47 | 107255 | 1 | 3/16" X 1" KEY |
| 48 | 363145 | 2 | 1" CLAMP COLLAR |
| 49 | 363187 | 2 | 1" FLANGE BEARING |

72" Mid-Cut Deck Assembly

| # | PART NO. | QTY | DESCRIPTION |
|-----|----------|-----|-----------------------------|
| 53 | 582182 | 1 | MC LIFT RISER WELDMENT |
| 54 | 583236 | 1 | ACTUATOR EXTENSION |
| 55 | 583294 | 1 | ELECTRIC ACTUATOR |
| 56 | 583499 | 2 | E.L. PIVOT ARM |
| 57 | 100252 | 6 | 1/4"-20 X 3/4" HEX BOLT |
| 58 | 582217 | 1 | E.L. RAM WELDMENT |
| 59 | 582215 | 1 | E.L. PIVOT MOUNT WELDMENT |
| 60 | 583153 | 1 | 72" DECK BELT |
| 61 | 423175 | 1 | PUMP IDLER PIVOT |
| 62 | 583474 | 2 | CASTER ROD |
| 66 | 373089 | 1 | 3/8" RETAINING WASHER |
| 67 | 582108 | 1 | DEFLECTOR SHIELD 72" |
| 68 | 100300 | 4 | 3/8"-16 X 3" HEX BOLT |
| 69 | 100301 | 4 | 3/8"-16 X 3 1/4" HEX BOLT |
| 71 | 100273 | 2 | 5/16"-18 X 1" HEX BOLT |
| 72 | 823330 | 4 | CASTER ARM PIVOT |
| 73 | 823090 | 4 | CASTER BAR PIVOT |
| 74A | 582053 | 1 | LEFT HAND CASTER ARM |
| 74B | 582051 | 1 | RIGHT HAND CASTER ARM |
| 75 | 582100 | 1 | RIGHT HAND BELT SHIELD |
| 76 | 582059 | 2 | CASTER BAR WELDMENT |
| 77 | 823150 | 2 | SPRING |
| 78 | 582112 | 1 | 72" DECK TUBE WELDMENT |
| 79 | 583074 | 2 | ROLLER MOUNT |
| 80 | 100298 | 2 | 3/8"-16 X 2 1/2" HEX BOLT |
| 82 | 753028 | 4 | KNOB |
| 83 | 107516 | 2 | 3/8" X 2 1/4" CARRIAGE BOLT |
| 84 | 107513 | 3 | 3/8"-16 X 3" CARRIAGE BOLT |
| 85 | 593074 | 1 | FLOATING IDLER SPRING |
| 86 | 823153 | 2 | SPACER - DECK |
| 87 | 823159 | 2 | SPRING SLIDE |
| 88 | 100030 | 2 | 3/8"-16 X 3" TAP BOLT |
| 90 | 823333 | 2 | DECK ATTACH PIN |
| 91 | 108001 | 3 | 3/16" QUICK PIN |
| 92 | 823200 | 1 | STEP TREAD |
| 95 | 823314 | 2 | TUBE SADDLE SPACER |
| 96 | 483017 | 2 | RIGHT HAND IDLER SPACER |
| 97 | 583472 | 2 | CASTER ROD END |
| 98 | 109025 | 2 | 5/8" HEAVY WASHER |
| 99 | 823210 | 2 | 1/2" X 2" CLEVIS PIN |
| 100 | 106763 | 2 | 1/8" COTTER PIN |
| 101 | 108510 | 4 | 7/8" E-RING |
| 102 | 373078 | 2 | CASTER SHIM WASHER |
| 103 | 823209 | 2 | 1/2" X 1 1/2" CLEVIS PIN |
| 104 | 363161 | 3 | BELT SHIELD CAP |
| 105 | 583393 | 4 | DECK ROD WASHER |
| 106 | 582090 | 1 | FRONT AXLE - 72MC |
| 108 | 582102 | 1 | BELT SHIELD LEFT HAND 72" |
| 111 | 582176 | 1 | CUT GAGE WELDMENT |

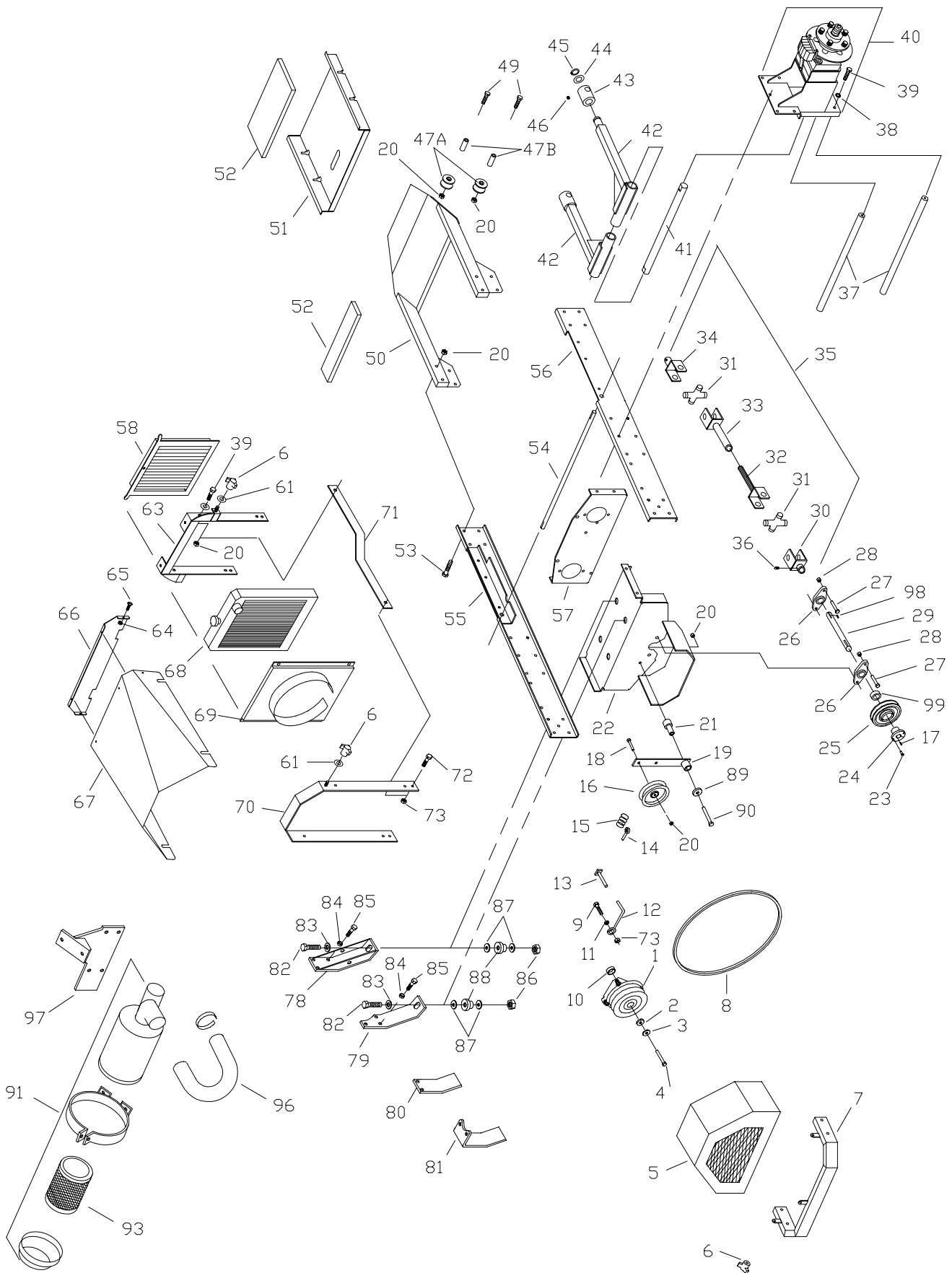
72" Mid-Cut Deck Assembly

| # | PART NO. | QTY | DESCRIPTION |
|------|----------|-----|---------------------------|
| 113 | 100291 | 1 | 3/8"-16 X 3/4" HEX BOLT |
| 114 | 105006 | 2 | 3/8" LOCKWASHER |
| 115 | 583422 | 1 | NUT-CUT GAGE |
| 116 | 583420 | 1 | POINTER CUT GAGE |
| 117 | 100347 | 3 | 5/8"-11 X 2" HEX BOLT |
| 118 | 363215 | 1 | 1" TAPER LOCK HUB |
| 119A | 592006 | 1 | SPRING RETAINER |
| 119B | 363007 | 1 | FLANGE BUSHING |
| 120 | 593096 | 1 | GEAR BOX TRUSS |
| 121 | 523329 | 1 | FLOATING IDLER - FLAT |
| 122 | 823211 | 2 | 1/2" X 2 1/2" RING PIN |
| 123 | 106778 | 3 | 3/16" X 1 1/2" COTTER PIN |
| 124 | 108001 | 2 | 3/16" QUICK PIN |
| 125 | 100293 | 4 | 3/8"-16 X 1 1/4" HHCS |

NOTES:

- A PERFORMANCE UPGRADE FOR DECK SPRING ASSY. REQUIRES ITEM 119.
BOTH SIDES NEED BE UPGRADED AT THE SAME TIME.

72" Mid-Cut Mainframe Assembly



72" Mid-Cut Mainframe Assembly

27 HP KAW
31 HP BRIGGS

| # | PART NO. | QTY | DESCRIPTION | | |
|-----|----------|-----|------------------------------|---|---|
| 1A | 583518 | 1 | ELECTRIC CLUTCH - 200 FT/LBS | X | |
| 1B | 583308 | 1 | ELECTRIC CLUTCH | | X |
| 2 | 373089 | 1 | RETAINER WASHER | | |
| 3 | 423069 | 2 | 7/16" SPRING DISC WASHER | | |
| 4 | 100534 | 1 | 7/16"-20 X 1 1/4" HEX BOLT | | |
| 5 | 582157 | 1 | CLUTCH COVER - IL3 | | X |
| 5A | 822146 | 1 | REAR COVER WELDM'T | X | |
| 5A | 823335 | 2 | REAR COVER - STRAP | X | |
| 5A | 583221 | 1 | REAR COVER - KAW | X | |
| 6 | 753028 | 7 | KNOB | | |
| 7 | 582132 | 1 | ENGINE GUARD | | X |
| 7A | 582061 | 1 | ENGINE GUARD | X | |
| 8 | 523374 | 1 | CLUTCH BELT | | X |
| 8A | 583517 | 1 | CLUTCH BELT | X | |
| 9 | 100273 | 16 | 5/16"-18 X 1" HEX BOLT | | |
| 10 | 823248 | 2 | CLUTCH SPACER 9/32 | | |
| 11 | 105258 | 6 | 5/16" FLAT WASHER | | |
| 12 | 363075 | 1 | ROUND BELT GUIDE | | |
| 13 | 582169 | 1 | CLUTCH STOP | | |
| 14 | 363080 | 1 | RIGHT EYE BOLT | | |
| 15 | 593074 | 1 | IDLER SPRING HH | | |
| 16 | 483025 | 1 | RIGHT HAND IDLER PULLEY | | |
| 17 | 107259 | 1 | 1/4" X 1/4" X 1" KEY | | |
| 18 | 100294 | 6 | 3/8"-16 X 1 1/2" HEX BOLT | | |
| 19 | 422025 | 1 | TENSIONER W/BUSHING | | |
| 19A | 523111 | X | BUSHING (SERVICE) | | |
| 20 | 104257 | 32 | 3/8"-16 NYLOC NUT | | |
| 21 | 823030 | 1 | PUMP IDLER SUPPORT | | |
| 22A | 582163 | 1 | ENGINE BASE 31 GAS MC | | X |
| 22B | 582043 | 1 | ENGINE BASE | X | |
| 23 | 100503 | 2 | 1/4" X 3/4" HEX BOLT | | |
| 24 | 363215 | 1 | TAPER LOCK HUB | | |
| 25 | 363216 | 1 | TAPER LOCK SHEAVE | | |
| 26 | 823032 | 2 | 2-BOLT FLANGE BEARING | | |
| 27 | 100311 | 4 | 7/16"-14 X 1 1/4" HEX BOLT | | |
| 28 | 104258 | 4 | 7/16"-14 NYLOC NUT | | |
| 29 | 583271 | 1 | POWER SHAFT - MC - DSL | | X |
| 29A | 583080 | 1 | POWER SHAFT - MC | X | |
| 30 | 523414 | 1 | 1" YOKE | | |
| 31 | 523415 | 2 | CROSS & BEARING | | |
| 32 | 593075 | 1 | YOKE SHAFT | | |
| 33 | 583481 | 1 | YOKE TUBE | | |
| 34 | 823372 | 1 | 3/4" YOKE | | |
| 35 | 593064 | 1 | DRIVE SHAFT MC | | |
| 36 | 103295 | 2 | 3/8"-16 X 1/2" SET SCREW | | |
| 37 | 823066 | 2 | BRACE ROD - LOWER | | |
| 38 | 105006 | 6 | 3/8" LOCK WASHER | | |
| 39 | 100292 | 23 | 3/8"-16 X 1" HEX BOLT | | |
| 40 | | | SEE HYDRAULIC ILLUSTRATION | | |
| 41 | 823050 | 1 | DECK ARM SHAFT | | |

72" Mid-Cut Mainframe Assembly

27 HP KAW
31 HP BRIGGS

| # | PART NO. | QTY | DESCRIPTION | | |
|-----|------------|-----|--------------------------------|---|---|
| 42 | 822036 | 2 | DECK ARM | | |
| 43 | 822090 | 2 | DECK SWIVEL W/ZERK | | |
| 44 | 823015 | 4 | DECK ARM WASHER | | |
| 45 | 108502 | 2 | SNAP RING | | |
| 46 | 111004 | 12 | 1/4"-28 GREASE ZERK | | |
| 47 | 583464 | 2 | FRONT ROLLER - MC (REF ONLY) | | |
| 47A | 583464 | 2 | FRONT ROLLER | | |
| 47B | 583490 | 2 | FRONT ROLLER TUBE | | |
| 49 | 100298 | 2 | 3/8"-16 X 2 1/2" HEX BOLT | | |
| 50 | 582092 | 1 | FRONT FRAME | | |
| 51 | 582094 | 1 | FOOT PLATE | | |
| 52 | 583374 | 1 | FOOT REST PAD LARGE | | |
| 52 | 583373 | 1 | FOOT REST PAD SMALL | | |
| 53 | 100295 | 4 | 3/8"-16 X 1 3/4" HEX BOLT | | |
| 54 | 823140 | 1 | PARK SHAFT | | |
| 55 | 582124 | 1 | LEFT HAND FRAME RAIL | | X |
| 55A | 582041 | 1 | LEFT HAND FRAME RAIL | X | |
| 56 | 582126 | 1 | RIGHT HAND FRAME RAIL | | X |
| 56A | 582039 | 1 | RIGHT HAND FRAME RAIL | X | |
| 57 | | | SEE HYDRAULIC ILLUSTRATION | | |
| 58 | 583301 | 1 | RADIATOR SCREEN | | |
| 61 | 105260 | 13 | 3/8" FLAT WASHER | | |
| 63 | 582159 | 1 | RADIATOR MOUNT | | |
| 64 | 104252 | 15 | #10-24 NYLOC NUT | | |
| 65 | 101039 | 17 | #10-24 X 5/8" SCREW | | |
| 66 | 583010 | 1 | FRONT ENGINE COVER - IL3 | | |
| 67 | 583296 | 1 | ENGINE COVER | | |
| 68 | SEE NOTE A | 1 | RADIATOR ASSY. | | |
| 69 | 583476 | 1 | FAN SHROUD | | |
| 70 | 582161 | 1 | HOOD BRACE | | |
| 71 | 583356 | 2 | HOOD SIDE BRACE | | |
| 72 | 100271 | 4 | 5/16"-18 X 3/4" HEX BOLT | | |
| 73 | 104256 | 5 | 4/16"-18 NYLOC NUT | | |
| 78 | 583250 | 2 | ENGINE MOUNT FRONT | | |
| 79 | 582116 | 2 | ENGINE MOUNT - 3 CYL. | | |
| 80 | 582151 | 1 | FUEL PUMP MOUNT | | |
| 81 | 582134 | 1 | FUEL FILTER MOUNT | | |
| 82 | 100331 | 4 | 1/2"-13 X 2 1/2" HEX BOLT | | |
| 83 | 105264 | 4 | 1/2" FLAT WASHER | | |
| 84 | 105005 | 6 | 5/16" LOCK WASHER | | |
| 85 | 109031 | 6 | M8-1.25 X 20MM HEX BOLT | | |
| 86 | 104259 | 4 | 1/2"-13 NYLOC NUT | | |
| 87 | 105264 | 8 | 1/2" STANDARD FLAT WASHER | | |
| 89 | 373089 | 1 | RETAINING WASHER | | |
| 90 | 100300 | 2 | 3/8"-16 X 3" HEX BOLT | | |
| 91 | 583297 | 1 | AIR CLEANER ASSY STRAIGHT | | |
| 93 | 583298 | 1 | AIR FILTER ELEMENT | | |
| 96 | 583369 | 1 | AIR FILTER HOSE U-SHAPE | | |
| 97 | 582153 | 1 | AIR FILTER MOUNT | | |

72" Mid-Cut Mainframe Assembly

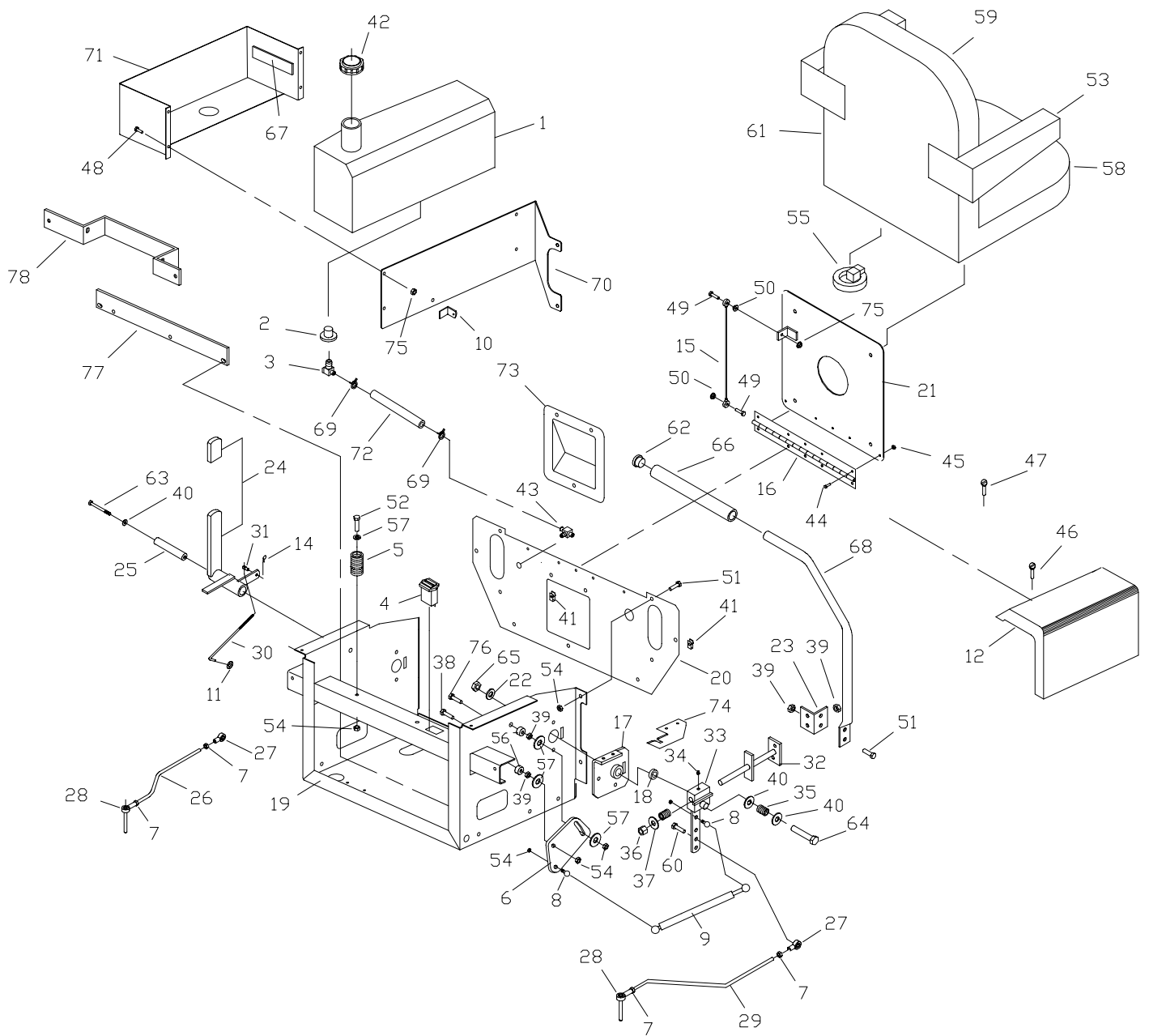
27 HP KAW
31 HP BRIGGS

| # | PART NO. | QTY | DESCRIPTION | | |
|----|----------|-----|-----------------|--|--|
| 98 | 107258 | 1 | POWER SHAFT KEY | | |
| 99 | 363145 | 1 | 1" CLAMP COLLAR | | |

NOTE:

A CONTACT ENGINE MFG FOR ALL ENGINE & RADIATOR PARTS NOT SHOWN. **ENCORE MFG DO NOT SERVICE THESE PARTS!**

72" Mid-Cut Seat Frame Assembly



72" Mid-Cut Seatframe Assembly

27 HP KAW
31 HP BRIGGS

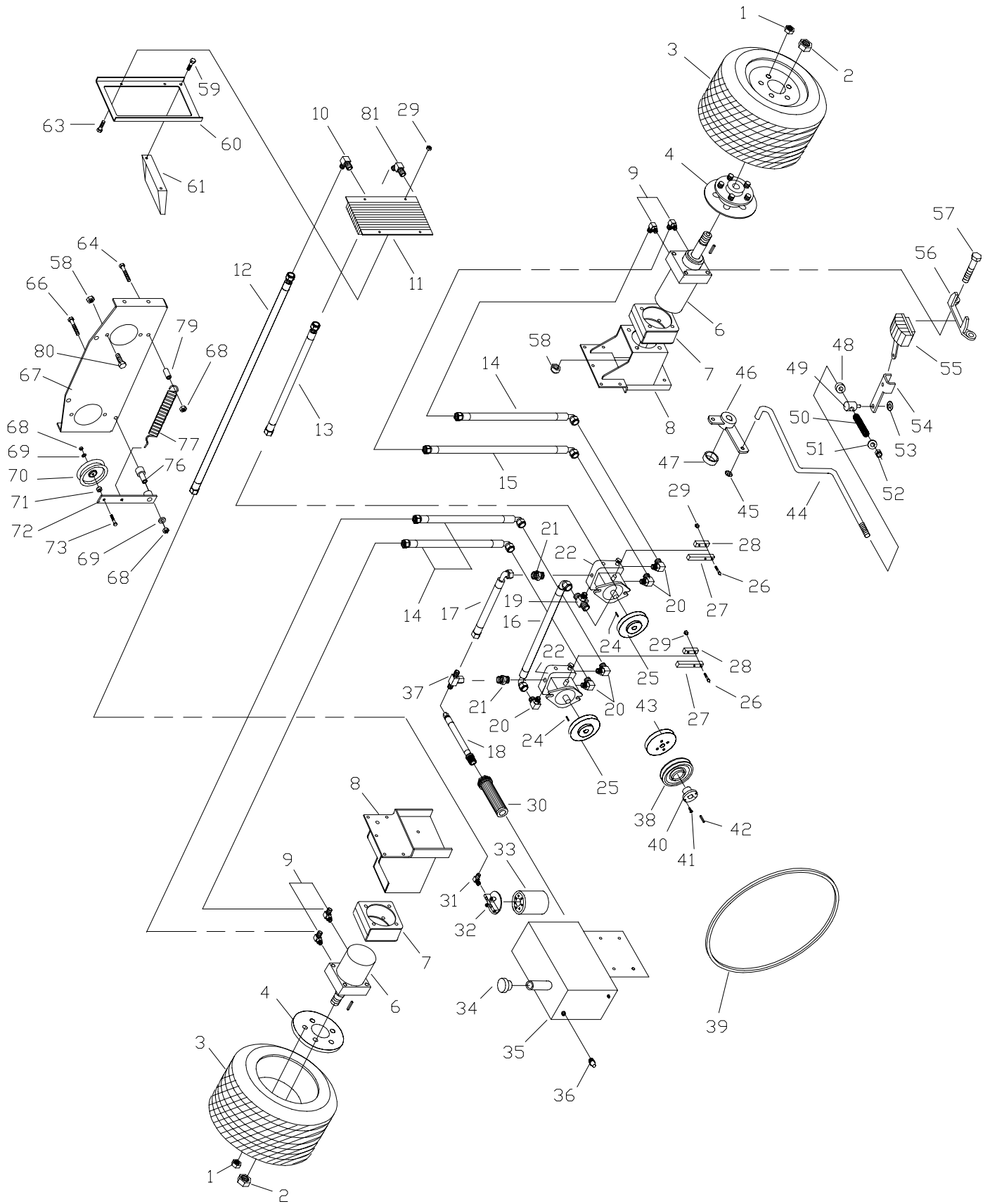
| # | PART NO. | QTY | DESCRIPTION | | |
|-----|----------|-----|----------------------------|--|--|
| 1 | 583154 | 2 | FUEL TANK - MC | | |
| 2 | 393042 | 2 | GROMMET | | |
| 3 | 583183 | 2 | FUEL TANK ADAPTER | | |
| 4 | 523283 | 1 | HOUR METER | | |
| 5 | 523278 | 2 | SEAT SPRING | | |
| 6 | 583438 | 2 | ADJUSTMENT PLATE | | |
| 7 | 104752 | 4 | 5/16"-24 JAM NUT | | |
| 8 | 823221 | 4 | 10MM BALL STUD | | |
| 9 | 583415 | 2 | DAMPENER CONTROL | | |
| 10 | 583046 | 2 | BACK PLATE TAB | | |
| 11 | 153045 | 2 | 5/16" PUSH NUT | | |
| 12A | 583065 | 1 | RIGHT FENDER | | |
| 12B | 583064 | 1 | LEFT FENDER | | |
| 14 | 363165 | 1 | HAIR PIN COTTER | | |
| 15 | 523044 | 1 | SEAT CABLE | | |
| 16 | 523105 | 1 | SEAT HINGE | | |
| 17A | 582110 | 1 | LEFT HAND PIVOT W/BUSHING | | |
| 17B | 582109 | 1 | RIGHT HAND PIVOT W/BUSHING | | |
| 18 | 253059 | 2 | ENGAGEMENT BUSHING | | |
| 19 | 822054 | 1 | SEAT FRAME WELDMENT | | |
| 20 | 583028 | 1 | FRONT - SEAT FRAME | | |
| 21 | 822058 | 1 | SEAT PLATE | | |
| 22 | 373089 | 2 | RETAINING WASHER | | |
| 23 | 523222 | 2 | CONTROL LEVER ANG.E | | |
| 24 | 582048 | 1 | PARK LEVER W/GRIP | | |
| 25 | 363105 | 1 | IDLER BUSHING | | |
| 26 | 583140 | 1 | PUMP CONTROL LINK - LH | | |
| 27 | 453082 | 2 | 5/16"-24 ROD END - MALE | | |
| 28 | 423160 | 2 | 5/16"-24 BALL STUD | | |
| 29 | 583138 | 1 | PUMP CONTROL LINK - RH | | |
| 30 | 823132 | 1 | PARK BRAKE LINK | | |
| 31 | 363029 | 2 | 5/16" ROD SWIVEL | | |
| 32A | 582084 | 1 | LH NEUTRAL LOCK PIVOT | | |
| 32B | 582082 | 1 | RH NEUTRAL LOCK PIVOT | | |
| 33 | 822075 | 2 | DRIVE BLOCK W/ZERK | | |
| 34 | 111004 | 2 | 1/4"-24 ZERK | | |
| 35 | 363024 | 4 | COMPRESSION SPRING | | |
| 36 | 104259 | 4 | 1/2"-13 NYLOC NUT | | |
| 37 | 105264 | 2 | 1/2" FLAT WASHER | | |
| 38 | 100275 | 2 | 5/16"-18 X 1 1/2" HEX BOLT | | |
| 39 | 109001 | 8 | 5/16"-18 WHIZLOCK NUT | | |
| 40 | 105260 | 6 | 3/8" FLAT WASHER | | |
| 41 | 109015 | 8 | 1/4"-20 NUT CLIP | | |
| 42 | 363257 | 2 | FUEL CAP W/GASKET | | |
| 43 | 583050 | 1 | FUEL VALVE | | |
| 44 | 101039 | 5 | #10-28 X 5/8" SCREW | | |
| 45 | 104252 | 4 | #10-28 NYLOC NUT | | |
| 46 | 103004 | 2 | 1/4"-14 X 3/4" SCREW | | |
| 47 | 102000 | 7 | #12-24 CUTTING SCREW | | |
| 48 | 100252 | 8 | 1/4"-20 X 3/4" HEX BOLT | | |

72" Mid-Cut Seatframe Assembly

27 HP KAW
31 HP BRIGGS

| # | PART NO. | QTY | DESCRIPTION | 27 HP KAW | 31 HP BRIGGS |
|-----|----------|-----|-------------------------------|-----------|--------------|
| 49 | 100004 | 8 | 1/4"-20 X 1" HEX BOLT | | |
| 50 | 109000 | 8 | 1/4"-20 WHIZLOCK NUT | | |
| 51 | 100271 | 8 | 5/16"-18 X 3/4" HEX BOLT | | |
| 52 | 100273 | 2 | 5/16"-18 X 1" HEX BOLT | | |
| 53 | 583091 | 2 | ARM REST PAD KIT | | |
| 53A | 583242 | 1 | ARM REST - LEFT HAND | | |
| 53B | 583243 | 1 | ARM REST - RIGHT HAND | | |
| 54 | 104256 | 20 | 5/16"-24 NYLOC NUT | | |
| 55 | 523030 | 1 | SEAT SWITCH | | |
| 56 | 363113 | 4 | WHEEL PULLEY SPACER | | |
| 57 | 105258 | 11 | 5/16" FLAT WASHER | | |
| 58 | 583089 | 1 | SEAT CUSHION | | |
| 59 | 583090 | 1 | BACK CUSHION | | |
| 60 | 100274 | 2 | 5/16"-18 X 1 1/4" HEX BOLT | | |
| 61 | 583077 | 1 | SEAT | | |
| 62 | 523033 | 2 | HANDLE PLUG | | |
| 63 | 100303 | 1 | 3/8"-16 X 4" HEX BOLT | | |
| 64 | 100305 | 2 | 3/8"-16 X 4 1/2" HEX BOLT | | |
| 65 | 104257 | 3 | 3/8"-16 NYLOC NUT | | |
| 66 | 523032 | 2 | HANDLE GRIP | | |
| 67 | 363201 | 4 | TANK PAD | | |
| 68A | 523017 | 2 | HANDLE W/O GRIP & PLUG | | |
| 68B | 522100 | 2 | HANDLE COMPLETE W/GRIP & PLUG | | |
| 69 | 363098 | 5 | FUEL LINE CLAMP | | |
| 70A | 583054 | 1 | TANK BACK PLATE - LH | | |
| 70B | 583052 | 1 | TANK BACK PLATE - RH | | |
| 71A | 582065 | 1 | FUEL TANK SADDLE LEFT HAND | | |
| 71B | 582045 | 1 | FUEL TANK SADDLE RIGHT HAND | | |
| 72A | 583186 | 1 | FUEL LINE LEFT HAND | | |
| 72B | 583185 | 1 | FUEL LINE RIGHT HAND | | |
| 73 | 583037 | 1 | CONTROL PANEL | | |
| 74A | 583254 | 1 | RIGHT HAND LEVER LOCK | | |
| 74B | 583256 | 1 | LEFT HAND LEVER LOCK | | |
| 75 | 104255 | 2 | 1/4"-20 NYLOC NUT | | |
| 76 | 107520 | 2 | 5/16"-18 X 3/4" HEX BOLT | | |
| 77 | 583188 | 1 | BATTERY MOUNT - KAWASAKI ONLY | X | |
| 78 | 583401 | 1 | BATTERY MOUNT | | X |
| 79 | 583519 | 1 | FULL SUSPENSION SEAT | | |

72" Mid-Cut Large Hydro Pump Assembly



72" Mid-Cut

Hydraulic Assembly (21L Series)

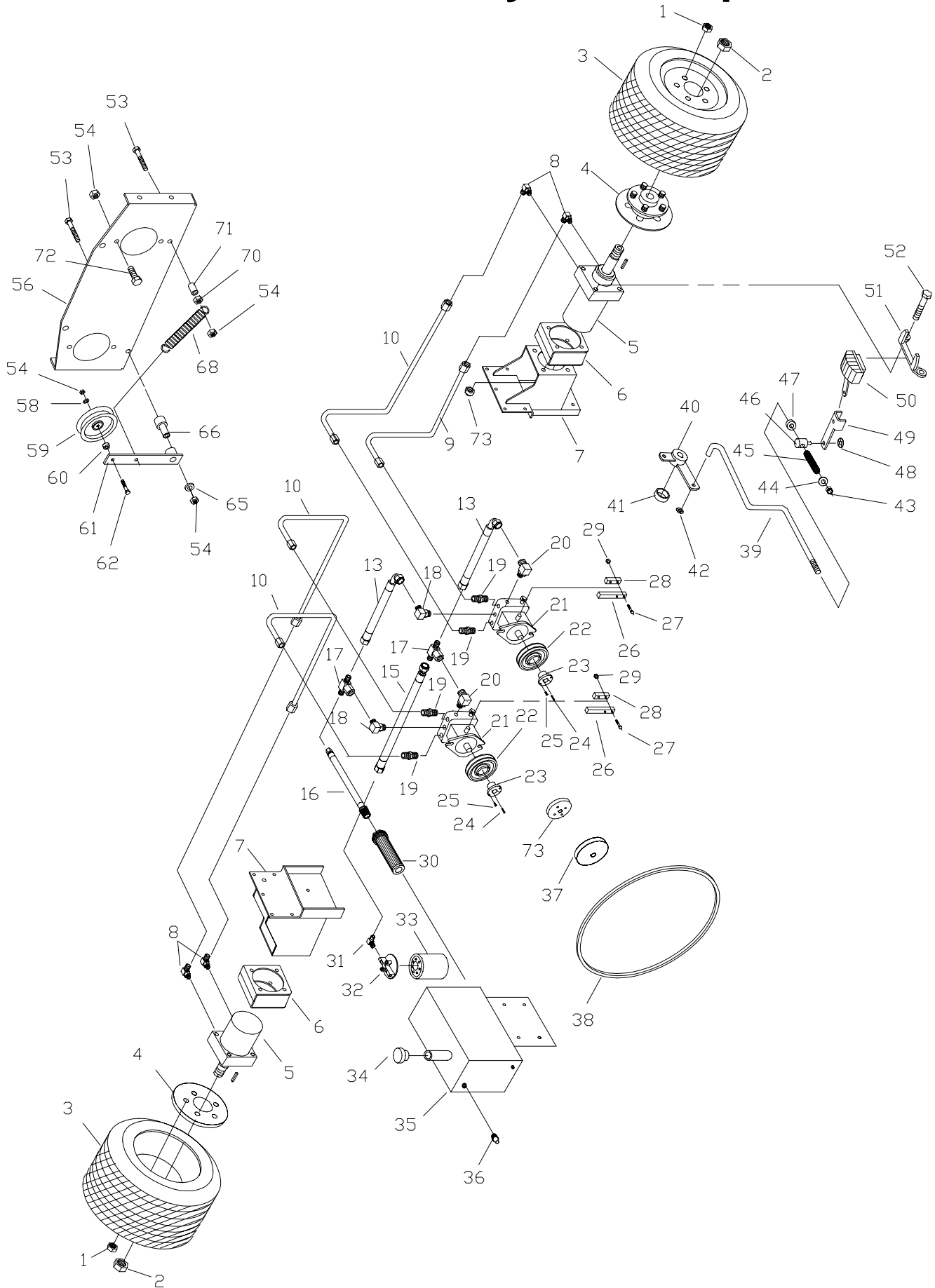
| # | PART NO. | QTY | DESCRIPTION |
|-----|----------|-----|---------------------------------------|
| 1 | 103023 | 10 | 1/2" LUG NUT |
| 2 | 104511 | 2 | 3/4"-16 HEX NUT |
| 3 | 583055 | 2 | DRIVE WHEEL ASSY (COMPLETE) |
| 3A | 583059 | X | DRIVE TIRE (24 X 12 X 12) |
| 3B | 583487 | X | BAR LUG TIRE (23 X 10.5 X 12) |
| 3C | 583058 | X | RIM W/ VALVESTEM |
| 4 | 582008 | 2 | WHEEL HUB |
| 6 | 583022 | 2 | LARGE WHEEL MOTOR - MP24 |
| 6A | 583520 | X | SEAL KIT - MP24 |
| 7 | 582031 | 4 | MOTOR SPACER |
| 8A | 582002 | 1 | RIGHT HAND MOTOR MOUNT |
| 8B | 582004 | 1 | LEFT HAND MOTOR MOUNT |
| 9 | 523058 | 4 | RETURN ADPT. |
| 10 | 583214 | 2 | OIL COOLER ADAPTER |
| 11 | 583201 | 1 | OIL COOLER |
| 12 | 583216 | 1 | COOLER TO FILTER HOSE |
| 13 | 583215 | 1 | PUMP TO COOLER HOSE |
| 14 | 583461 | 3 | 21" HOSE |
| 15 | 583462 | 1 | 26 3/4" HOSE |
| 16 | 583124 | 1 | PUMP TO PUMP RETURN HOSE |
| 17 | 583131 | 1 | PUMP TO PUMP SUPPLY HOSE |
| 18 | 583130 | 1 | TANK TO PUMP SUCTION HOSE |
| 19 | 583127 | 1 | SUPPLY TEE |
| 20 | 453113 | 5 | PUMP ELBOW |
| 21 | 583126 | 2 | STRAIGHT ADAPTER |
| 22 | 583081 | 2 | LARGE V-PUMP (BDP-21LH) |
| 22A | 583377 | | PUMP SEAL KIT - (BDP-21LH) |
| 24 | 453102 | 2 | PUMP KEY (5MM) |
| 25 | 583092 | 2 | PUMP PULLEY |
| 26 | 100257 | 4 | 1/4"-20 X 1 3/4" HEX BOLT |
| 27 | 823104 | 2 | PUMP CONTROL BAR |
| 28 | 453090 | 2 | CLAMP BAR |
| 29 | 104255 | 6 | 1/4"-20 NYLOC NUT |
| 30 | 583132 | 1 | SUCTION SCREEN |
| 31 | 583129 | 1 | FILTER ADAPTER |
| 32 | 423064 | 1 | FILTER HEAD |
| 33 | 423063 | 1 | HYDRO OIL FILTER (NO CROSS REF AVAIL) |
| 34 | 423165 | 1 | OIL BREATHER CAP |
| 35 | 583049 | 1 | OIL TANK |
| 36 | 423065 | 1 | OIL EYE |
| 37 | 523128 | 1 | TENSIONER SWIVEL |
| 38 | 583217 | 1 | PUMP DRIVE PULLEY (ENGINE) |
| 39 | 823026 | 1 | PUMP BELT |
| 40 | 363215 | 1 | TAPER LOCK HUB |
| 41 | 100252 | 2 | 1/4"-20 X 3/4" HEX BOLT |
| 42 | 107258 | 2 | 1/4" X 1/4" X 3/4" KEY |
| 43 | 583274 | 1 | FRONT DRIVE ADAPTER |
| 44A | 583042 | 1 | RIGHT HAND BRAKE ROD |
| 44B | 583044 | 1 | LEFT HAND BRAKE ROD |
| 45 | 153045 | 3 | 5/16" PUSH NUT |

72" Mid-Cut

Hydraulic Assembly (21L Series)

| # | PART NO. | QTY | DESCRIPTION |
|-----|----------|-----|------------------------------|
| 46 | 422049 | 1 | BRAKE CRANK |
| 47 | 373086 | 1 | BLADE SPACER |
| 48 | 523112 | 2 | 5/16" CLAMP COLLAR |
| 49 | 423130 | 2 | PARK BRAKE SWIVEL |
| 50 | 523024 | 2 | DECK DR. SPRING |
| 51 | 105258 | 2 | 5/16" FLAT WASHER |
| 52 | 104256 | 20 | 5/16" NYLOC NUT |
| 53 | 363177 | 2 | 3/8" PUSH NUT |
| 54 | 583460 | 2 | BRAKE ARM |
| 55A | 583038 | 1 | RIGHT HAND BRAKE CALIPER |
| 55B | 583039 | 1 | LEFT HAND BRAKE CALIPER |
| 55C | 583511 | X | BRAKE PAD KIT |
| 56 | 583040 | 2 | CALIPER MOUNT BRACKET |
| 57 | 100343 | 8 | 1/2"-13 X 9" HEX BOLT (72") |
| 58 | 104261 | 12 | 1/2"-13 NYLOC NUT |
| 59 | 100273 | 16 | 5/16"-18 X 1" HEX BOLT |
| 60 | 583204 | 1 | OIL COOLER CHANNEL |
| 61 | 582167 | 1 | OIL COOLER MOUNT - 3 CYL |
| 63 | 100252 | 6 | 1/4"-20 3/4" HEX BOLT |
| 64 | 100300 | 2 | 3/8"-16 X 3" HEX BOLT |
| 66 | 100303 | 2 | 3/8"-16 X 4" HEX BOLT |
| 67 | 582076 | 1 | PUMP PLATE |
| 68 | 104257 | 32 | 3/8" NYLOC NUT |
| 69 | 105260 | 13 | 3/8" FLAT WASHER |
| 70 | 823351 | 1 | PUMP DRIVE IDLER |
| 71 | 523277 | 1 | IDLER SPACER |
| 72 | 422025 | 1 | TENSIONER W/BUSHING |
| 72A | 523111 | X | BUSHING (SERVICE) |
| 73 | 107501 | 2 | 3/8"-16 X 2" CARRIAGE BOLT |
| 76 | 823030 | 2 | PUMP IDLER SUPPORT |
| 77 | 583144 | 1 | PUMP IDLER SPRING |
| 79 | 393070 | 1 | DRIVE IDLER BUSHING |
| 80 | 100327 | 4 | 1/2"-13 X 1 1/2" HEX BOLT |
| 81 | 583444 | 1 | OIL COOLER ADAPTER 45 DEGREE |

72" Mid-Cut Small Hydro Pump Assembly



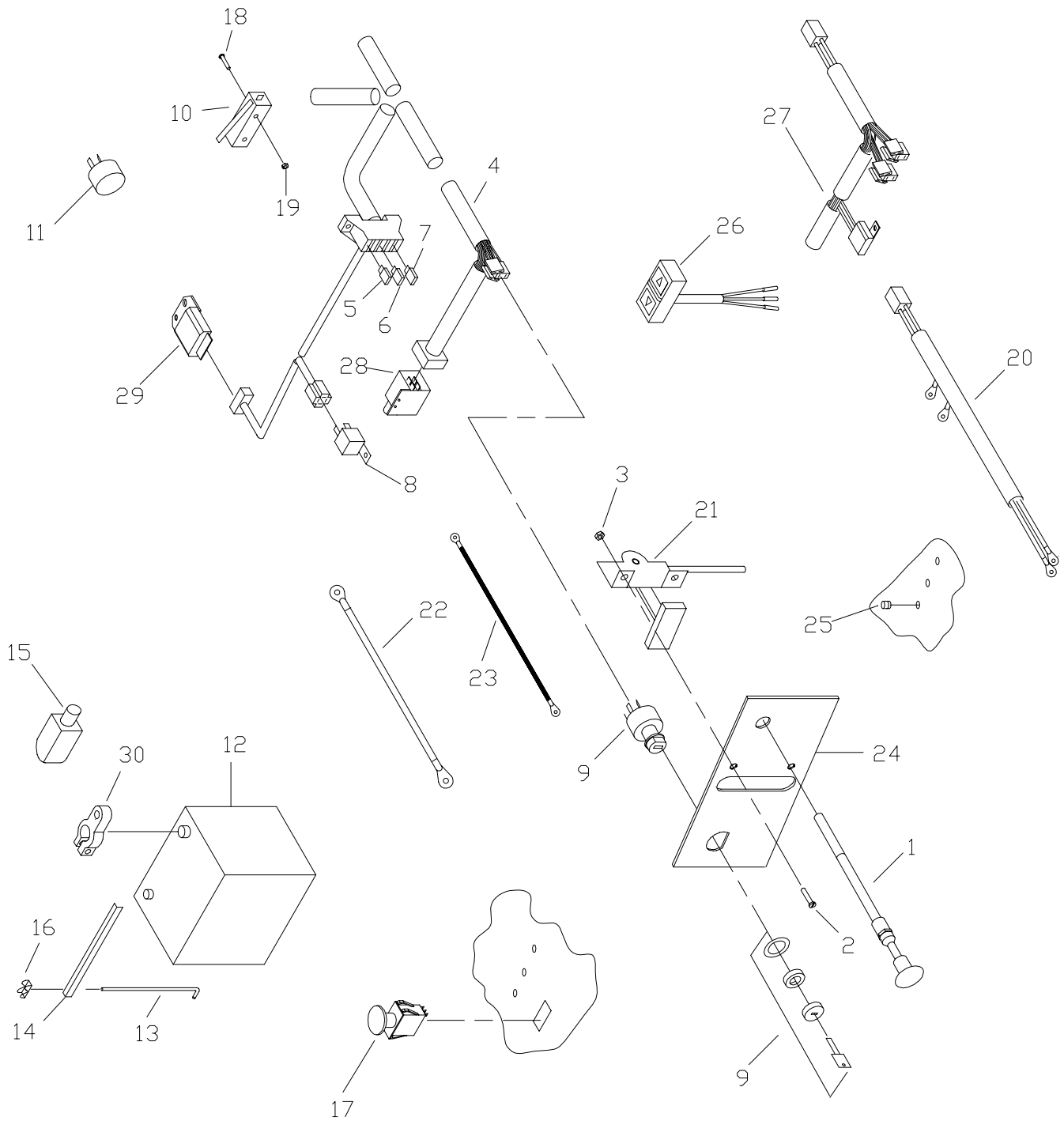
72" Mid-Cut Small Hydro Pump Assembly

| # | PART NO. | QTY | DESCRIPTION |
|-----|----------|-----|--|
| 1 | 103023 | 10 | LUG NUT |
| 2 | 104511 | 2 | WHEEL NUT |
| 3 | 583055 | 2 | DRIVE WHEEL ASSY (COMPLETE) |
| 3A | 583059 | X | DRIVE TIRE (24 X 12 X 12) |
| 3B | 583487 | X | BAR LUG TIRE (23 X 10.5 X 12) |
| 3C | 583058 | X | RIM W/ VALVESTEM |
| 4 | 582008 | 2 | WHEEL HUB |
| 5 | 583325 | 2 | WHEEL MOTOR |
| 6 | 582031 | 4 | MOTOR SPACER |
| 7A | 582002 | 1 | RIGHT HAND MOTOR MOUNT |
| 7B | 582004 | 1 | LEFT HAND MOTOR MOUNT |
| 8 | 523058 | 4 | 90 DEGREE MOTOR ADAPTER |
| 9 | 583462 | 3 | HOSE WHEEL DRIVE SHORT MC 72 (21" LG) |
| 10 | 583461 | 1 | HOSE WHEEL DRIVE LONG MC 72 (26 3/4" LG) |
| 13 | 583241 | 2 | PUMP TO PUMP HOSE |
| 16 | 453129 | 1 | PUMP TO TANK SUPPLY HOSE |
| 17 | 453106 | 2 | SWIVEL TEE |
| 18 | 583391 | 2 | 90 DEGREE INLET ADAPTER |
| 19 | 583126 | 4 | STRAIGHT ADAPTER |
| 20 | 453074 | 2 | 90 DEGREE ADAPTER |
| 21 | 453087 | 2 | PUMP-V (10L) |
| 21A | 453146 | X | PUMP SEAL KIT - (10L) |
| 22 | 583382 | 2 | PUMP PULLEY |
| 23 | 423178 | 2 | TAPER HUB |
| 24 | 453102 | 2 | PUMP KEY |
| 25 | 100252 | 2 | 1/4"-20 X 3/4" HEX BOLT |
| 26 | 823104 | 2 | CONTROL BAR |
| 27 | 100257 | 4 | 1/4"-20 X 1 3/4" HEX BOLT |
| 28 | 453090 | 2 | CLAMP BAR |
| 29 | 104255 | 6 | 1/4"-20 NYLOC NUT |
| 30 | 583132 | 1 | SUCTION SCREEN |
| 31 | 583442 | 1 | FILTER ADAPTER(61" & 72") |
| 32 | 423064 | 1 | FILTER HEAD |
| 33 | 423063 | 1 | HYDRO OIL FILTER (NO CROSS REF AVAIL) |
| 34 | 423165 | 1 | OIL BREATHER CAP(61" & 72") |
| 35 | 583049 | 1 | OIL TANK(61" & 72") |
| 36 | 423065 | 1 | OIL EYE |
| 37 | 583217 | 1 | PUMP DRIVE PULLEY |
| 38 | 583385 | 1 | PUMP BELT |
| 39A | 583042 | 1 | RIGHT HAND BRAKE ROD(61" & 72") |
| 39B | 583044 | 1 | LEFT HAND BRAKE ROD(61" & 72") |
| 40 | 422049 | 1 | BRAKE CRANK |
| 41 | 373086 | 1 | SPACER |
| 42 | 104256 | 6 | 5/16" PUSH NUT |
| 43 | 104256 | 20 | 5/16" NYLOC NUT |
| 44 | 105258 | 2 | 5/16" FLAT WASHER |
| 45 | 523024 | 2 | SPRING |
| 46 | 423130 | 2 | PARK BRAKE SWIVEL |
| 47 | 423112 | 2 | 5/16" CLAMP COLLAR |
| 48 | 363177 | 2 | 3/8" PUSH NUT |

72" Mid-Cut Small Hydro Pump Assembly

| # | PART NO. | QTY | DESCRIPTION |
|-----|----------|-----|----------------------------|
| 49 | 583460 | 2 | BRAKE ARM |
| 50A | 583038 | 1 | RIGHT HAND BRAKE CALIPER |
| 50B | 583039 | 1 | LEFT HAND BRAKE CALIPER |
| 50C | 583511 | X | BRAKE PAD KIT |
| 51 | 583040 | 2 | CALIPER MOUNT |
| 52 | 100343 | 8 | 1/2"-13 X 9" HEX BOLT |
| 53 | 100300 | 2 | 3/8"-16 X 3" HEX BOLT |
| 54 | 104257 | 32 | 3/8" NYLOC NUT |
| 56 | 583328 | 1 | PUMP PLATE |
| 58 | 105260 | 13 | 3/8" FLAT WASHER |
| 59 | 823351 | 1 | FLAT IDLER |
| 60 | 523277 | 1 | IDLER SPACER |
| 61 | 422025 | 1 | TENSIONER W/BUSHING |
| 61A | 523111 | X | BUSHING (SERVICE) |
| 62 | 107501 | 2 | 3/8"-16 X 2" CARRIAGE BOLT |
| 65 | 373089 | 2 | RETAINING WASHER |
| 66 | 393070 | 1 | IDLER PIVOT |
| 68 | 583144 | 1 | PUMP IDLER SPRING |
| 70 | 109007 | 2 | 3/8"-16 WHIZLOCK NUT |
| 71 | 523277 | 1 | SPACER |
| 73 | 583274 | 1 | FRONT DRIVE ADAPTER |

72" Mid-Cut Electrical Section - Gas



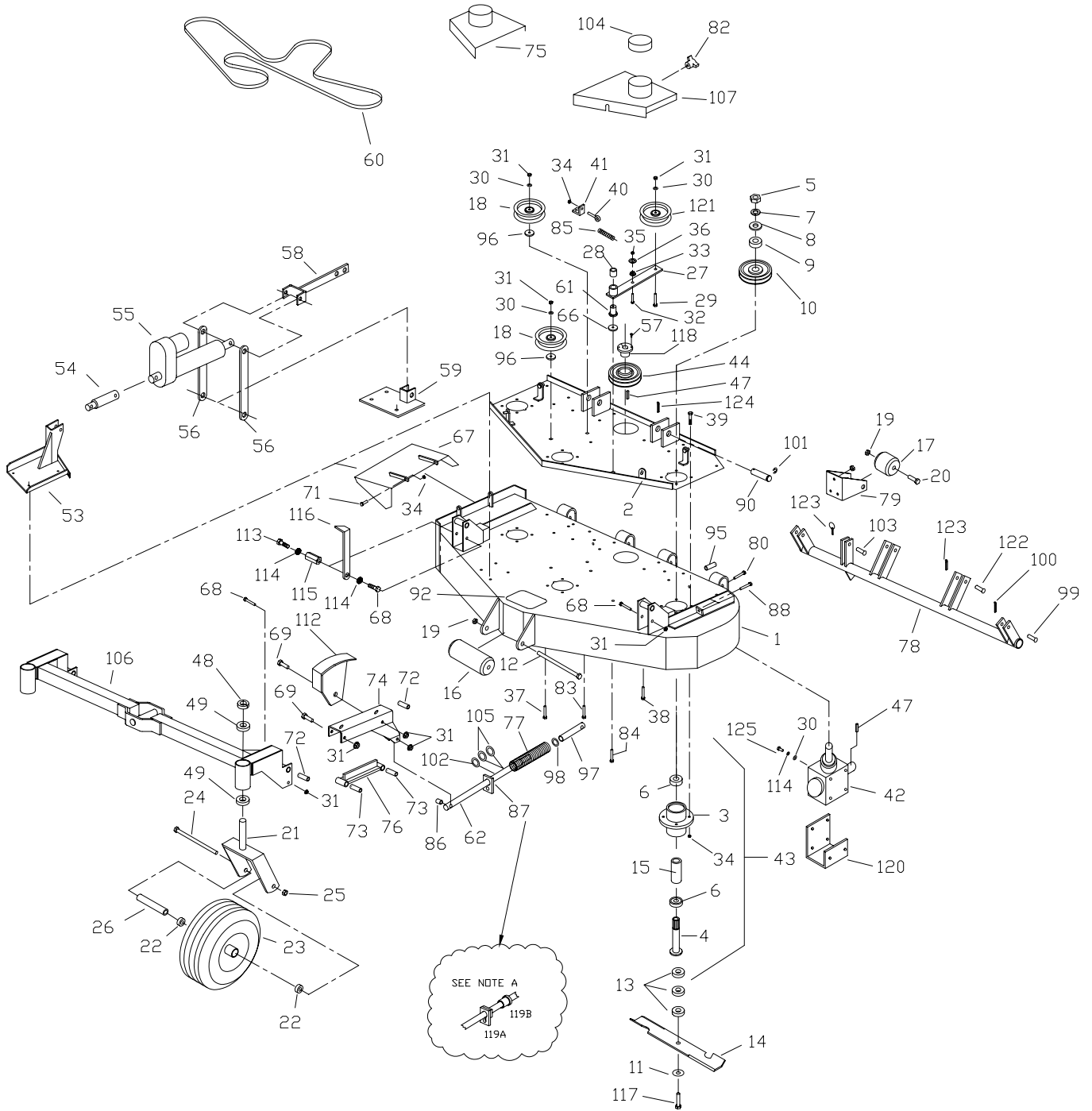
72" Mid-Cut Electrical Section - Gas

27 HP KAW
31 HP BRIGGS

| # | PART NO. | QTY | DESCRIPTION | 27 HP KAW | 31 HP BRIGGS |
|-----|----------|-----|---------------------------------|-----------|--------------|
| 1 | 583161 | 1 | CHOKE CABLE - IL3G | | X |
| 1A | 523037 | 1 | CHOKE CABLE | X | |
| 2 | 101039 | 6 | #10-24 X 5/8" PAN HEAD BOLT | | |
| 3 | 104252 | 6 | #10-24 NYLOC NUT | | |
| 4A | 583317 | 1 | WIRE HARNESS 950G-MC | | X |
| 4B | 583484 | 1 | WIRE HARNESS | X | |
| 5 | 583502 | 1 | 30 AMP FUSE | | |
| 6 | 523146 | 1 | 15 AMP FUSE | | |
| 7 | 523147 | 1 | 10 AMP FUSE | | |
| 8 | 523042 | 3 | RELAY | | |
| 9 | 423027 | 1 | IGNITION SWITCH ASSEMBLY | | |
| 10 | 823193 | 1 | NEUTRAL SWITCH | | |
| 11 | 823194 | 1 | ALARM | | |
| 12 | 523050 | 1 | 12 VOLT BATTERY | | |
| 13 | 423172 | 2 | BATTERY HOLD DOWN | | |
| 14 | 583403 | 1 | BATTERY ANGLE - IL3 | | |
| 15 | 583409 | 1 | POSITIVE BATTERY BOOT | | |
| 16 | 109017 | 2 | 1/4"-20 WING NUT | | |
| 17 | 523031 | 1 | PTO SWITCH | | |
| 18 | 101252 | 2 | #5-40 X 1" SCREW | | |
| 19 | 104520 | 2 | #5-40 NUT | | |
| 20 | 583319 | 1 | ENGINE WIRE HAR.-950G | X | |
| 21 | 583057 | 1 | THROTTLE CONTROL | | X |
| 21A | 523038 | 1 | THROTTLE CONTROL | X | |
| 22 | 823196 | 1 | POSITIVE CABLE | | |
| 23 | 823197 | 1 | NEGATIVE CABLE | | |
| 24 | 583037 | 1 | CONTROL PANEL | | |
| 25 | 523036 | 4 | WARNING LIGHT | | |
| 26 | 583411 | 1 | ELECTRIC LIFT SWITCH | | |
| 27 | 583412 | 1 | ELECTRIC LIFT HARNESS | | |
| 28 | 523034 | 1 | PARK SWITCH | | |
| 29 | 583423 | 1 | TIME DELAY MODULE | | |
| 30 | 583429 | 2 | BATTERY TERMINAL | | |
| 31 | 423030 | 1 | SAFETY MODULE | X | |
| 32 | 583351 | 2 | ELECTRIC LIFT RELAY (5 PRONG) | | |
| 33 | 583238 | 1 | RELAY MOUNT | | |

**72" MID-CUT
DIESEL ENGINE
OPTION
SECTION**

72" Mid-Cut Deck Assembly



72" Mid-Cut Deck Assembly

| # | PART NO. | QTY | DESCRIPTION |
|-----|----------|-----|-------------------------------|
| 1 | 582096 | 1 | 72" MC DECK WELDMENT |
| 2 | 582098 | 1 | 72" DECK CHANNEL |
| 3 | 583111 | 3 | SPINDLE HOUSING |
| 4 | 583112 | 3 | SPINDLE SHAFT |
| 5 | 104511 | 3 | 3/4"-16 HEX NUT |
| 6 | 363350 | 6 | BEARING - BLADE SPINDLE |
| 7 | 105010 | 3 | 3/4" LOCK WASHER |
| 8 | 105269 | 3 | 3/4" SAE FLAT WASHER |
| 9 | 583110 | 3 | PULLEY SPACER |
| 10 | 583107 | 3 | PULLEY - SPINDLE 5 3/4" |
| 11 | 583108 | 3 | 5/8" SPRING DISC WASHER |
| 12 | 100351 | 1 | 5/8"-11 X 8 1/2" HEX BOLT |
| 13 | 583109 | 9 | BLADE SPACER |
| 14 | 583287 | 3 | 25" OFFSET BLADE |
| 15 | 583113 | 3 | BEARING SPACER TUBE |
| 16 | 603023 | 1 | ANTI-SCALP ROLLER |
| 17 | 523084 | 2 | REAR DECK ROLLER |
| 18 | 583162 | 2 | 6" FLAT IDLER |
| 19 | 104261 | 3 | 5/8"-11 NYLOC NUT |
| 20 | 100346 | 2 | 5/8"-11 X 4 1/2" HEX BOLT |
| 21 | 822088 | 2 | WIDE TAIL WHEEL STRUT |
| 22 | 363187 | 4 | 1" BEARING |
| 23 | 823220 | 2 | WIDE TAIL WHEEL (COMPLETE) |
| 23A | 823339 | X | TIRE (13 X 6.5 X 6) |
| 23B | 823338 | X | FRONT RIM W/ VALVESTEM |
| 24 | 100352 | 2 | 5/8"-11 X 9" HEX BOLT |
| 25 | 104261 | 2 | 5/8"-11 NYLOC NUT |
| 26 | 823245 | 2 | AXLE TUBE (WTW) |
| 27 | 822144 | 1 | DECK IDLER ARM W/BUSHING |
| 28 | 363007 | 1 | 3/4" FLANGE BUSHING |
| 29 | 107511 | 1 | 3/8"-16 X 2" CARRIAGE BOLT |
| 30 | 105260 | 8 | 3/8" FLAT WASHER |
| 31 | 104257 | 16 | 3/8"-16 NYLOC NUT |
| 32 | 100275 | 1 | 5/16"-18 X 1 1/2" HEX BOLT |
| 33 | 109001 | 2 | 5/16"-18 WHIZLOCK NUT |
| 34 | 104256 | 36 | 5/16"-18 NYLOC NUT |
| 35 | 109007 | 2 | 3/8"-16 WHIZLOCK NUT |
| 36 | 105258 | 9 | 5/16" FLAT WASHER |
| 37 | 107503 | 10 | 5/16"-18 X 3/4" CARRIAGE BOLT |
| 38 | 107509 | 5 | 5/16"-18 X 1" CARRIAGE BOLT |
| 39 | 100274 | 12 | 5/16"-18 X 1 1/4" HEX BOLT |
| 40 | 363080 | 1 | EYEBOLT - RIGHT |
| 41 | 523094 | 1 | SPRING MOUNT - DECK |
| 42 | 583166 | 1 | GEAR BOX LARGE |
| 43 | 583106 | 3 | BLADE SPINDLE ASSY |
| 44 | 583447 | 1 | 6" TAPER LOCK SHEAVE |
| 46 | 105005 | 4 | 5/16" LOCK WASHER |
| 47 | 107255 | 1 | 3/16" X 1" KEY |
| 48 | 363145 | 2 | 1" CLAMP COLLAR |
| 49 | 363187 | 2 | 1" FLANGE BEARING |

72" Mid-Cut Deck Assembly

| # | PART NO. | QTY | DESCRIPTION |
|-----|----------|-----|-----------------------------|
| 53 | 582182 | 1 | MC LIFT RISER WELDMENT |
| 54 | 583236 | 1 | ACTUATOR EXTENSION |
| 55 | 583294 | 1 | ELECTRIC ACTUATOR |
| 56 | 583499 | 2 | E.L. PIVOT ARM |
| 57 | 100252 | 6 | 1/4"-20 X 3/4" HEX BOLT |
| 58 | 582217 | 1 | E.L. RAM WELDMENT |
| 59 | 582215 | 1 | E.L. PIVOT MOUNT WELDMENT |
| 60 | 583153 | 1 | 72" DECK BELT |
| 61 | 423175 | 1 | PUMP IDLER PIVOT |
| 62 | 583474 | 2 | CASTER ROD |
| 66 | 373089 | 1 | 3/8" RETAINING WASHER |
| 67 | 582108 | 1 | DEFLECTOR SHIELD 72" |
| 68 | 100300 | 4 | 3/8"-16 X 3" HEX BOLT |
| 69 | 100301 | 4 | 3/8"-16 X 3 1/4" HEX BOLT |
| 71 | 100273 | 2 | 5/16"-18 X 1" HEX BOLT |
| 72 | 823330 | 4 | CASTER ARM PIVOT |
| 73 | 823090 | 4 | CASTER BAR PIVOT |
| 74A | 582053 | 1 | LEFT HAND CASTER ARM |
| 74B | 582051 | 1 | RIGHT HAND CASTER ARM |
| 75 | 582100 | 1 | RIGHT HAND BELT SHIELD |
| 76 | 582059 | 2 | CASTER BAR WELDMENT |
| 77 | 823150 | 2 | SPRING |
| 78 | 582112 | 1 | 72" DECK TUBE WELDMENT |
| 79 | 583074 | 2 | ROLLER MOUNT |
| 80 | 100298 | 2 | 3/8"-16 X 2 1/2" HEX BOLT |
| 82 | 753028 | 4 | KNOB |
| 83 | 107516 | 2 | 3/8" X 2 1/4" CARRIAGE BOLT |
| 84 | 107513 | 3 | 3/8"-16 X 3" CARRIAGE BOLT |
| 85 | 593074 | 1 | FLOATING IDLER SPRING |
| 86 | 823153 | 2 | SPACER - DECK |
| 87 | 823159 | 2 | SPRING SLIDE |
| 88 | 100030 | 2 | 3/8"-16 X 3" TAP BOLT |
| 90 | 823333 | 2 | DECK ATTACH PIN |
| 91 | 108001 | 3 | 3/16" QUICK PIN |
| 92 | 823200 | 1 | STEP TREAD |
| 95 | 823314 | 2 | TUBE SADDLE SPACER |
| 96 | 483017 | 2 | RIGHT HAND IDLER SPACER |
| 97 | 583472 | 2 | CASTER ROD END |
| 98 | 109025 | 2 | 5/8" HEAVY WASHER |
| 99 | 823210 | 2 | 1/2" X 2" CLEVIS PIN |
| 100 | 106763 | 2 | 1/8" COTTER PIN |
| 101 | 108510 | 4 | 7/8" E-RING |
| 102 | 373078 | 2 | CASTER SHIM WASHER |
| 103 | 823209 | 2 | 1/2" X 1 1/2" CLEVIS PIN |
| 104 | 363161 | 3 | BELT SHIELD CAP |
| 105 | 583393 | 4 | DECK ROD WASHER |
| 106 | 582090 | 1 | FRONT AXLE - 72MC |
| 108 | 582102 | 1 | BELT SHIELD LEFT HAND 72" |
| 111 | 582176 | 1 | CUT GAGE WELDMENT |

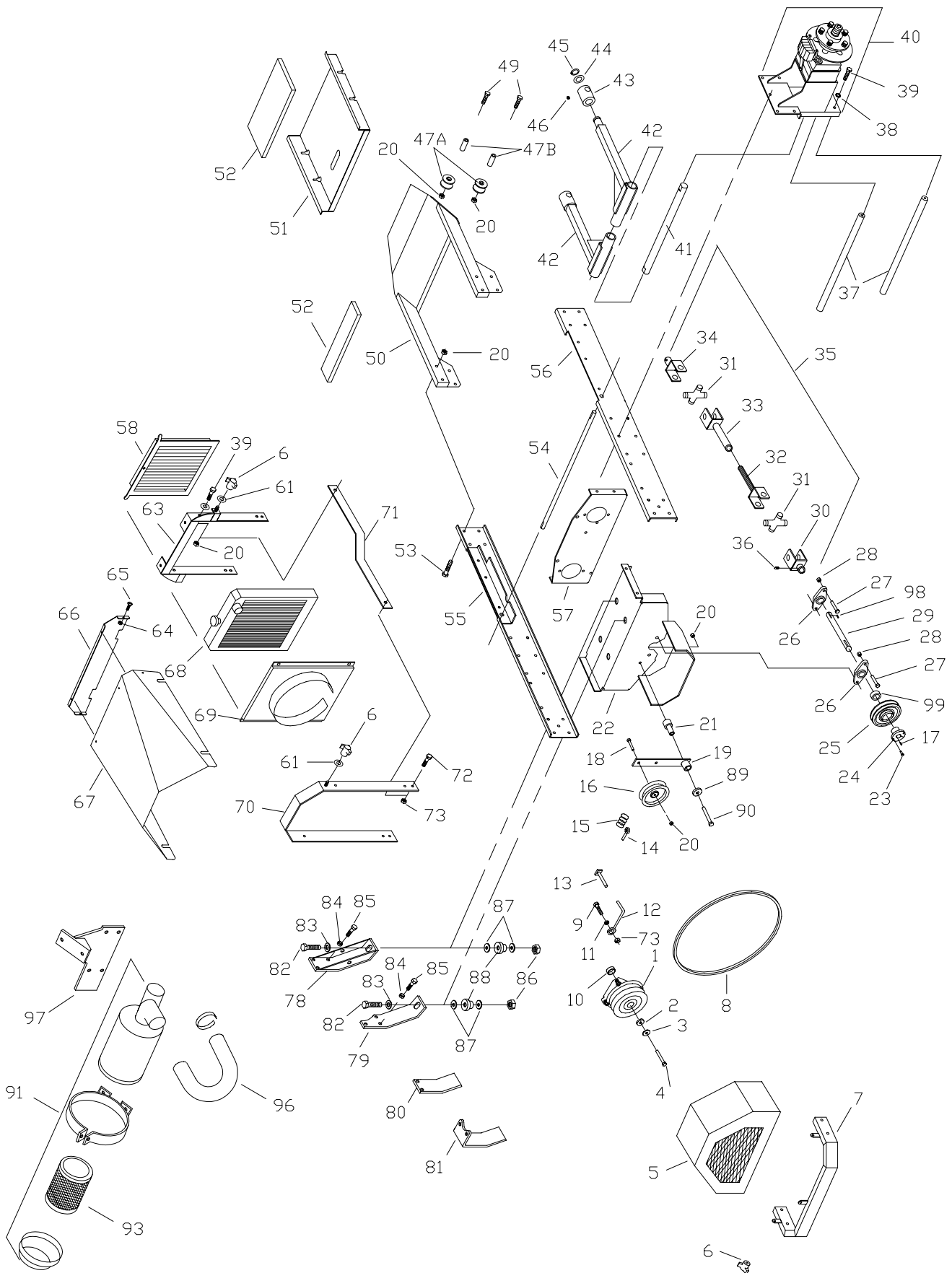
72" Mid-Cut Deck Assembly

| # | PART NO. | QTY | DESCRIPTION |
|------|----------|-----|---------------------------|
| 113 | 100291 | 1 | 3/8"-16 X 3/4" HEX BOLT |
| 114 | 105006 | 2 | 3/8" LOCKWASHER |
| 115 | 583422 | 1 | NUT-CUT GAGE |
| 116 | 583420 | 1 | POINTER CUT GAGE |
| 117 | 100347 | 3 | 5/8"-11 X 2" HEX BOLT |
| 118 | 363215 | 1 | 1" TAPER LOCK HUB |
| 119A | 592006 | 1 | SPRING RETAINER |
| 119B | 363007 | 1 | FLANGE BUSHING |
| 120 | 593096 | 1 | GEAR BOX TRUSS |
| 121 | 523329 | 1 | FLOATING IDLER - FLAT |
| 122 | 823211 | 2 | 1/2" X 2 1/2" RING PIN |
| 123 | 106778 | 3 | 3/16" X 1 1/2" COTTER PIN |
| 124 | 108001 | 2 | 3/16" QUICK PIN |
| 125 | 100293 | 4 | 3/8"-16 X 1 1/4" HHCS |

NOTES:

- A PREFORMANCE UPGRADE FOR DECK SPRING ASSY. REQUIRES ITEM 119. BOTH SIDES NEED BE UPGRADED AT THE SAME TIME.

72" Mid-Cut Mainframe Assembly



72" Mid-Cut Mainframe Assembly

| # | PART NO. | QTY | DESCRIPTION |
|-----|----------|-----|--------------------------------|
| 1 | 583308 | 1 | CLUTCH - 200 FT/LBS |
| 2 | 373089 | 1 | RETAINER WASHER |
| 3 | 423069 | 2 | 7/16" SPRING DISC WASHER |
| 4 | 100534 | 1 | 7/16"-20 X 1 1/4" HEX BOLT |
| 5 | 582157 | 1 | CLUTCH COVER - IL3 |
| 6 | 753028 | 7 | KNOB |
| 7 | 582132 | 1 | ENGINE GUARD |
| 8 | 523374 | 1 | CLUTCH BELT |
| 9 | 100273 | 16 | 5/16"-18 X 1" HEX BOLT |
| 10 | 823248 | 2 | CLUTCH SPACER 9/32 |
| 11 | 105258 | 6 | 5/16" FLAT WASHER |
| 12 | 363075 | 1 | ROUND BELT GUIDE |
| 13 | 582169 | 1 | CLUTCH STOP |
| 14 | 363080 | 1 | RIGHT EYE BOLT |
| 15 | 593074 | 1 | IDLER SPRING HH |
| 16 | 483025 | 1 | RIGHT HAND IDLER PULLEY |
| 17 | 107259 | 1 | 1/4" X 1/4" X 1" KEY |
| 18 | 100294 | 6 | 3/8"-16 X 1 1/2" HEX BOLT |
| 19 | 422025 | 1 | TENSIONER W/BUSHING |
| 19A | 523111 | X | BUSHING (SERVICE) |
| 20 | 104257 | 32 | 3/8"-16 NYLOC NUT |
| 21 | 823030 | 1 | PUMP IDLER SUPPORT |
| 22 | 582165 | 1 | ENGINE BASE 26 DSL MC |
| 23 | 100503 | 2 | 1/4" X 3/4" HEX BOLT |
| 24 | 363215 | 1 | TAPER LOCK HUB |
| 25 | 363216 | 1 | TAPER LOCK SHEAVE |
| 26 | 823032 | 2 | 2-BOLT FLANGE BEARING |
| 27 | 100311 | 4 | 7/16"-14 X 1 1/4" HEX BOLT |
| 28 | 104258 | 4 | 7/16"-14 NYLOC NUT |
| 29 | 583271 | 1 | POWER SHAFT - MC - DSL |
| 30 | 523414 | 1 | 1" YOKE |
| 31 | 523415 | 2 | CROSS & BEARING |
| 32 | 593075 | 1 | YOKE SHAFT |
| 33 | 583481 | 1 | YOKE TUBE |
| 34 | 823372 | 1 | 3/4" YOKE |
| 35 | 593064 | 1 | DRIVE SHAFT MC |
| 36 | 103295 | 2 | 3/8"-16 X 1/2" SET SCREW |
| 37 | 823066 | 2 | BRACE ROD - LOWER |
| 38 | 105006 | 6 | 3/8" LOCK WASHER |
| 39 | 100292 | 23 | 3/8"-16 X 1" HEX BOLT |
| 40 | | | SEE HYDRAULIC ILLUSTRATION |
| 41 | 823050 | 1 | DECK ARM SHAFT |
| 42 | 822036 | 2 | DECK ARM |
| 43 | 822090 | 2 | DECK SWIVEL W/ZERK |
| 44 | 823015 | 4 | DECK ARM WASHER |
| 45 | 108502 | 2 | SNAP RING |
| 46 | 111004 | 12 | 1/4"-28 GREASE ZERK |
| 47 | 583464 | 2 | FRONT ROLLER - MC (REF ONLY) |
| 47A | 583464 | 2 | FRONT ROLLER |
| 47B | 583490 | 2 | FRONT ROLLER TUBE |
| 49 | 100298 | 2 | 3/8"-16 X 2 1/2" HEX BOLT |
| 50 | 582092 | 1 | FRONT FRAME |

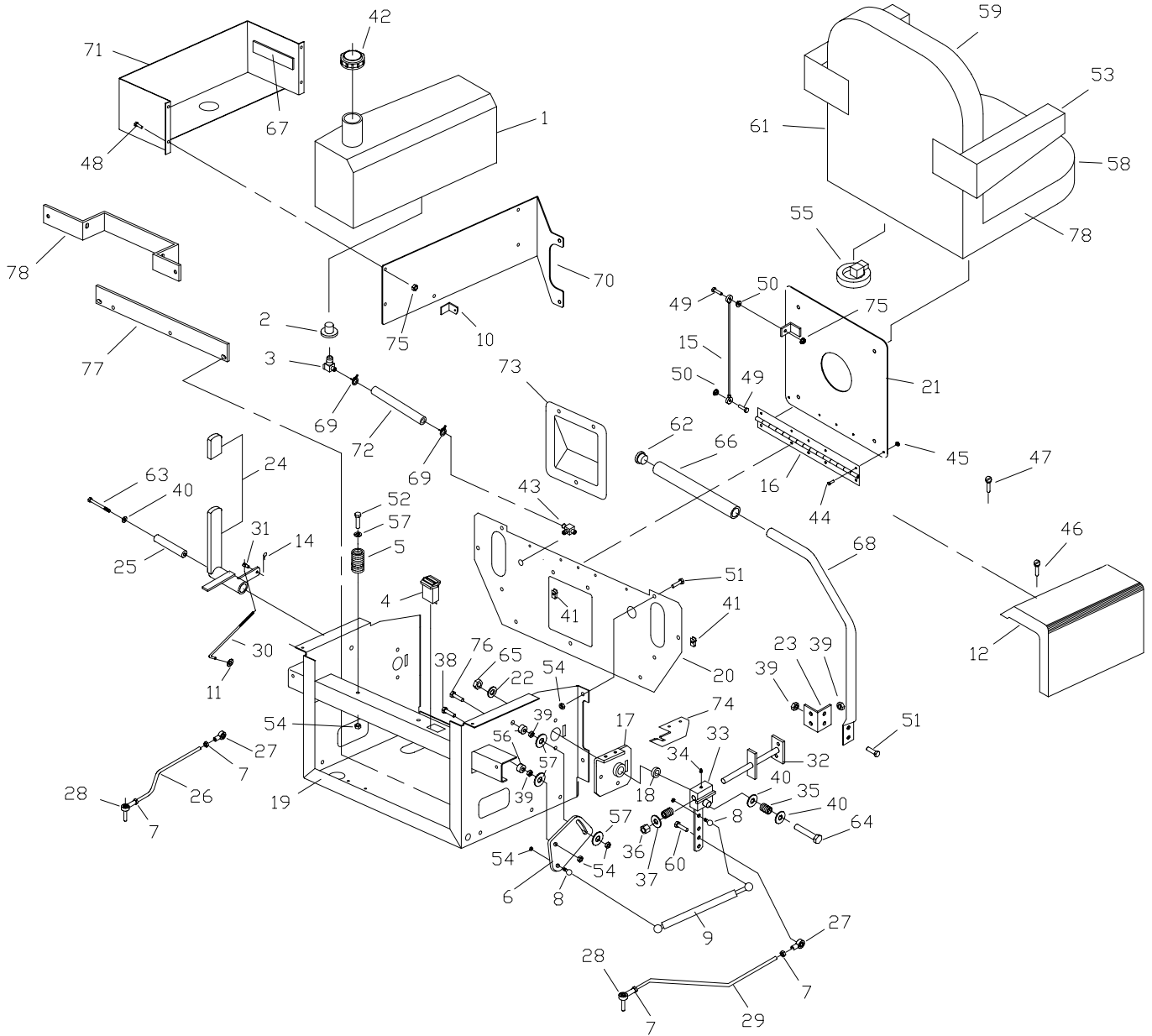
72" Mid-Cut Mainframe Assembly

| # | PART NO. | QTY | DESCRIPTION |
|----|------------|-----|----------------------------|
| 51 | 582094 | 1 | FOOT PLATE |
| 52 | 583374 | 1 | FOOT REST PAD LARGE |
| 52 | 583373 | 1 | FOOT REST PAD SMALL |
| 53 | 100295 | 4 | 3/8"-16 X 1 3/4" HEX BOLT |
| 54 | 823140 | 1 | PARK SHAFT |
| 55 | 582124 | 1 | LEFT HAND FRAME RAIL |
| 56 | 582126 | 1 | RIGHT HAND FRAME RAIL |
| 57 | | | SEE HYDRAULIC ILLUSTRATION |
| 58 | 583301 | 1 | RADIATOR SCREEN |
| 61 | 105260 | 13 | 3/8" FLAT WASHER |
| 63 | 582159 | 1 | RADIATOR MOUNT |
| 64 | 104252 | 15 | #10-24 NYLOC NUT |
| 65 | 101039 | 17 | #10-24 X 5/8" SCREW |
| 66 | 583010 | 1 | FRONT ENGINE COVER - IL3 |
| 67 | 583296 | 1 | ENGINE COVER |
| 68 | SEE NOTE A | 1 | RADIATOR ASSY. |
| 69 | 583476 | 1 | FAN SHROUD |
| 70 | 582161 | 1 | HOOD BRACE |
| 71 | 583356 | 2 | HOOD SIDE BRACE |
| 72 | 100271 | 4 | 5/16"-18 X 3/4" HEX BOLT |
| 73 | 104256 | 5 | 4/16"-18 NYLOC NUT |
| 78 | 583250 | 2 | ENGINE MOUNT FRONT |
| 79 | 582116 | 2 | ENGINE MOUNT - 3 CYL. |
| 80 | 582151 | 1 | FUEL PUMP MOUNT |
| 81 | 582134 | 1 | FUEL FILTER MOUNT |
| 82 | 100327 | 4 | 1/2"-13 X 1 1/2" HEX BOLT |
| 83 | 105264 | 4 | 1/2" FLAT WASHER |
| 84 | 105005 | 6 | 5/16" LOCK WASHER |
| 85 | 109031 | 6 | M8-1.25 X 20MM HEX BOLT |
| 86 | 104259 | 4 | 1/2"-13 NYLOC NUT |
| 87 | 583478 | 8 | WASHER-ISO MOUNT |
| 88 | 583303 | 4 | ISO BUSHING |
| 89 | 373089 | 1 | RETAINING WASHER |
| 90 | 100300 | 2 | 3/8"-16 X 3" HEX BOLT |
| 91 | 583364 | 1 | AIR CLEANER ASSY 90 DEGREE |
| 93 | 583298 | 1 | AIR FILTER ELEMENT |
| 96 | 583369 | 1 | AIR FILTER HOSE U-SHAPE |
| 97 | 582153 | 1 | AIR FILTER MOUNT |
| 98 | 107258 | | POWER SHAFT KEY |
| 99 | 363145 | 1 | 1" CLAMP COLLAR |

NOTE:

A CONTACT ENGINE MFG FOR ALL ENGINE & RADIATOR PARTS NOT SHOWN. **ENCORE MFG DO NOT SERVICE THESE PARTS!**

72" Mid-Cut Seat Frame Assembly



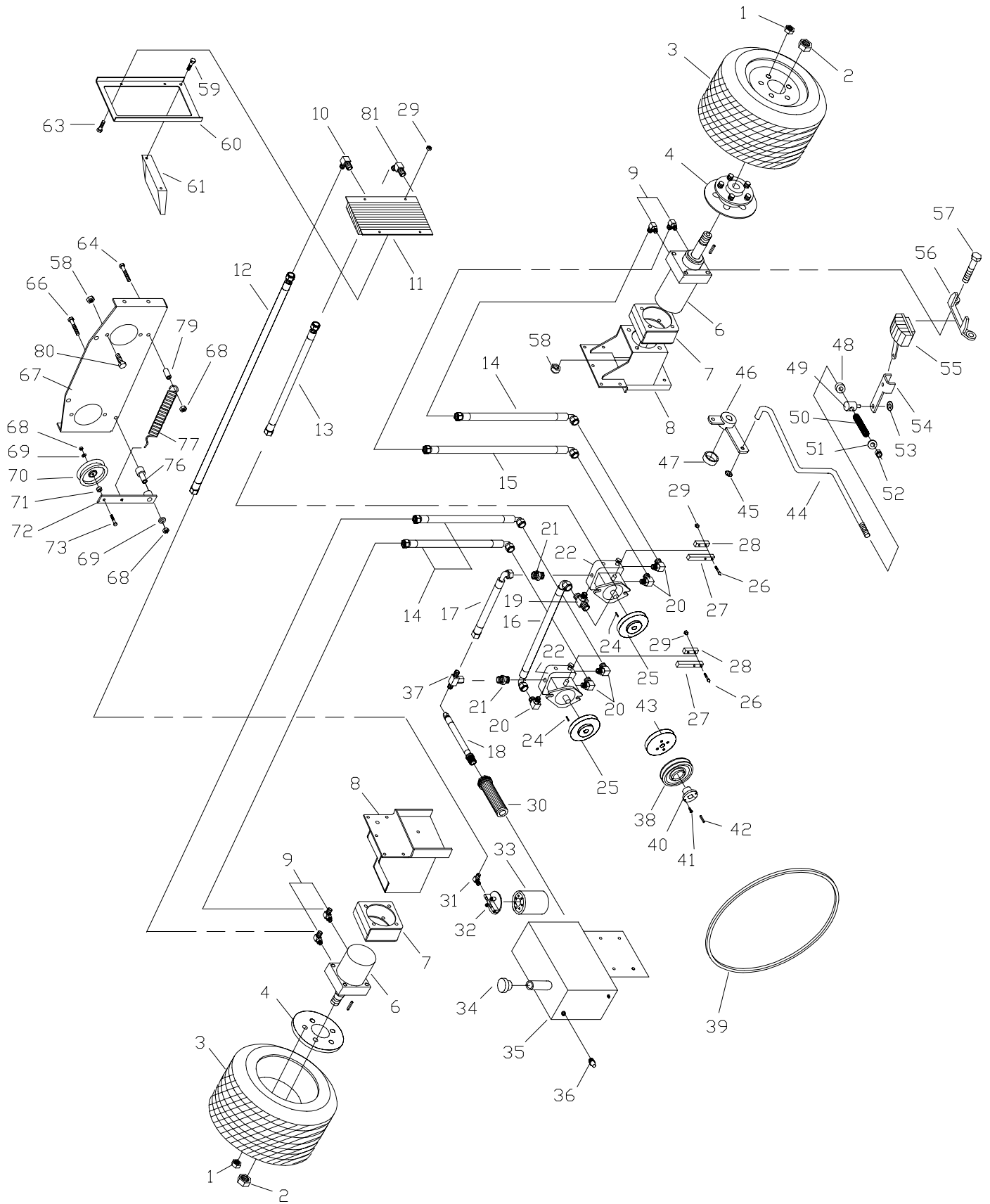
72" Mid-Cut Seatframe Assembly

| # | PART NO. | QTY | DESCRIPTION |
|-----|----------|-----|----------------------------|
| 1 | 583154 | 2 | FUEL TANK - MC |
| 2 | 393042 | 4 | GROMMET |
| 3 | 583183 | 4 | FUEL TANK ADAPTER |
| 4 | 523283 | 1 | HOUR METER |
| 5 | 523278 | 2 | SEAT SPRING |
| 6 | 583438 | 2 | ADJUSTMENT PLATE |
| 7 | 104752 | 4 | 5/16"-24 JAM NUT |
| 8 | 823221 | 4 | 10MM BALL STUD |
| 9 | 583415 | 2 | DAMPENER CONTROL |
| 10 | 583046 | 2 | BACK PLATE TAB |
| 11 | 153045 | 2 | 5/16" PUSH NUT |
| 12A | 583065 | 1 | RIGHT FENDER |
| 12B | 583064 | 1 | LEFT FENDER |
| 14 | 363165 | 1 | HAIR PIN COTTER |
| 15 | 523044 | 1 | SEAT CABLE |
| 16 | 523105 | 1 | SEAT HINGE |
| 17A | 582110 | 1 | LEFT HAND PIVOT W/BUSHING |
| 17B | 582109 | 1 | RIGHT HAND PIVOT W/BUSHING |
| 18 | 253059 | 2 | ENGAGEMENT BUSHING |
| 19 | 822054 | 1 | SEAT FRAME WELDMENT |
| 20 | 583028 | 1 | FRONT - SEAT FRAME |
| 21 | 822058 | 1 | SEAT PLATE |
| 22 | 373089 | 2 | RETAINING WASHER |
| 23 | 523222 | 2 | CONTROL LEVER ANG.E |
| 24 | 582048 | 1 | PARK LEVER W/GRIP |
| 25 | 363105 | 1 | IDLER BUSHING |
| 26 | 583140 | 1 | PUMP CONTROL LINK - LH |
| 27 | 453082 | 2 | 5/16"-24 ROD END - MALE |
| 28 | 423160 | 2 | 5/16" ROD END MALE |
| 29 | 583138 | 1 | PUMP CONTROL LINK - RH |
| 30 | 823132 | 1 | PARK BRAKE LINK |
| 31 | 363029 | 2 | 5/16" ROD SWIVEL |
| 32A | 582084 | 1 | LH NEUTRAL LOCK PIVOT |
| 32B | 582082 | 1 | RH NEUTRAL LOCK PIVOT |
| 33 | 822075 | 2 | DRIVE BLOCK W/ZERK |
| 34 | 111004 | 2 | 1/4"-24 ZERK |
| 35 | 363024 | 4 | COMPRESSION SPRING |
| 36 | 104259 | 4 | 1/2"-13 NYLOC NUT |
| 37 | 105264 | 2 | 1/2" FLAT WASHER |
| 38 | 100275 | 2 | 5/16"-18 X 1 1/2" HEX BOLT |
| 39 | 109001 | 8 | 5/16"-18 WHIZLOCK NUT |
| 40 | 105260 | 6 | 3/8" FLAT WASHER |
| 41 | 109015 | 8 | 1/4"-20 NUT CLIP |
| 42 | 583463 | 2 | DIESEL FUEL CAP - LARGE |
| 43 | 583302 | 1 | FUEL VALVE - DIESEL |
| 44 | 101039 | 5 | #10-28 X 5/8" SCREW |
| 45 | 104252 | 4 | #10-28 NYLOC NUT |
| 46 | 103004 | 2 | 1/4"-14 X 3/4" SCREW |
| 47 | 102000 | 7 | #12-24 CUTTING SCREW |
| 48 | 100252 | 8 | 1/4"-20 X 3/4" HEX BOLT |

72" Mid-Cut Seatframe Assembly

| # | PART NO. | QTY | DESCRIPTION |
|-----|----------|-----|---------------------------------------|
| 49 | 100004 | 8 | 1/4"-20 X 1" HEX BOLT |
| 50 | 109000 | 8 | 1/4"-20 WHIZLOCK NUT |
| 51 | 100271 | 8 | 5/16"-18 X 3/4" HEX BOLT |
| 52 | 100273 | 2 | 5/16"-18 X 1" HEX BOLT |
| 53 | 583091 | 2 | ARM REST PAD KIT |
| 54 | 104256 | 20 | 5/16"-24 NYLOC NUT |
| 55 | 523030 | 1 | SEAT SWITCH |
| 56 | 363113 | 4 | WHEEL PULLEY SPACER |
| 57 | 105258 | 11 | 5/16" FLAT WASHER |
| 58 | 583089 | 1 | SEAT CUSHION |
| 59 | 583090 | 1 | BACK CUSHION |
| 60 | 100274 | 2 | 5/16"-18 X 1 1/4" HEX BOLT |
| 61 | 583077 | 1 | SEAT |
| 62 | 523033 | 2 | HANDLE PLUG |
| 63 | 100303 | 1 | 3/8"-16 X 4" HEX BOLT |
| 64 | 100305 | 2 | 3/8"-16 X 4 1/2" HEX BOLT |
| 65 | 104257 | 3 | 3/8"-16 NYLOC NUT |
| 66 | 523032 | 2 | HANDLE GRIP |
| 67 | 363201 | 4 | TANK PAD |
| 68A | 523017 | 2 | HANDLE W/O GRIP & PLUG |
| 68B | 522100 | 2 | HANDLE COMPLETE W/GRIP & PLUG |
| 69 | 363098 | 10 | FUEL LINE CLAMP |
| 70A | 583054 | 1 | TANK BACK PLATE - LH |
| 70B | 583052 | 1 | TANK BACK PLATE - RH |
| 71A | 582065 | 1 | FUEL TANK SADDLE LEFT HAND |
| 71B | 582045 | 1 | FUEL TANK SADDLE RIGHT HAND |
| 72A | 583186 | 1 | FUEL LINE LEFT HAND |
| 72B | 583185 | 1 | FUEL LINE RIGHT HAND |
| 73 | 583037 | 1 | CONTROL PANEL |
| 74A | 583254 | 1 | RIGHT HAND LEVER LOCK |
| 74B | 583256 | 1 | LEFT HAND LEVER LOCK |
| 75 | 104255 | 2 | 1/4"-20 NYLOC NUT |
| 76 | 107520 | 2 | 5/16"-18 X 3/4" HEX BOLT |
| 78 | 583401 | 1 | BATTERY MOUNT - 31 GAS/27 DIESEL ONLY |
| 79 | 583519 | 1 | FULL SUSPENSION SEAT |

72" Mid-Cut Large Hydro Pump Assembly



72" Mid-Cut Hydraulic Assembly (21L Series)

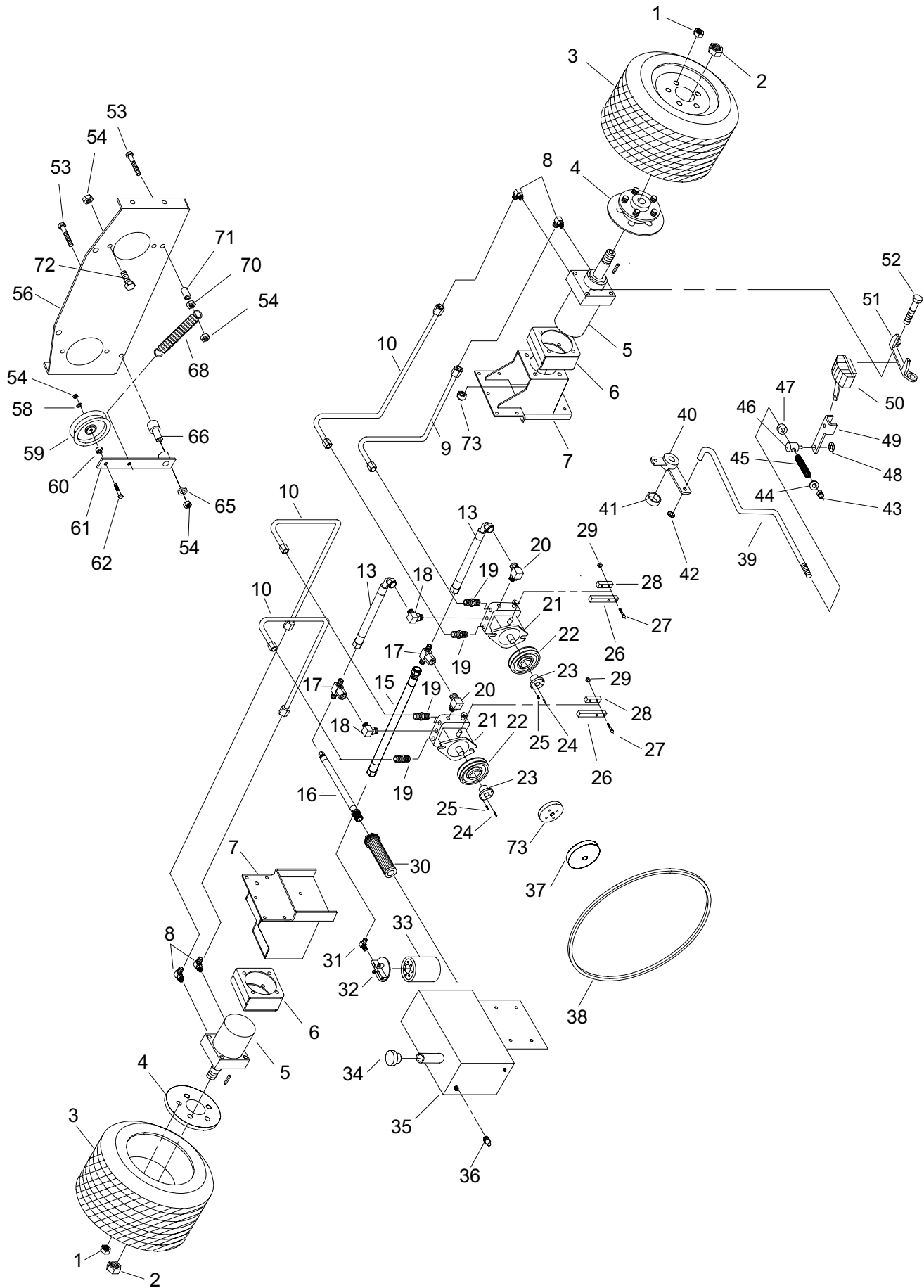
| # | PART NO. | QTY | DESCRIPTION |
|-----|----------|-----|---------------------------------------|
| 1 | 103023 | 10 | 1/2" LUG NUT |
| 2 | 104511 | 2 | 3/4"-16 HEX NUT |
| 3 | 583055 | 2 | DRIVE WHEEL ASSY (COMPLETE) |
| 3A | 583059 | X | DRIVE TIRE (24 X 12 X 12) |
| 3B | 583487 | X | BAR LUG TIRE (23 X 10.5 X 12) |
| 3C | 583058 | X | RIM W/ VALVESTEM |
| 4 | 582008 | 2 | WHEEL HUB |
| 6 | 583022 | 2 | LARGE WHEEL MOTOR - MP24 |
| 6A | 583520 | X | SEAL KIT - MP24 |
| 7 | 582031 | 4 | MOTOR SPACER |
| 8A | 582002 | 1 | RIGHT HAND MOTOR MOUNT |
| 8B | 582004 | 1 | LEFT HAND MOTOR MOUNT |
| 9 | 523058 | 4 | RETURN ADPT. |
| 10 | 583214 | 2 | OIL COOLER ADAPTER |
| 11 | 583201 | 1 | OIL COOLER |
| 12 | 583216 | 1 | COOLER TO FILTER HOSE |
| 13 | 583215 | 1 | PUMP TO COOLER HOSE |
| 14 | 583461 | 3 | 21" HOSE |
| 15 | 583462 | 1 | 26 3/4" HOSE |
| 16 | 583124 | 1 | PUMP TO PUMP RETURN HOSE |
| 17 | 583131 | 1 | PUMP TO PUMP SUPPLY HOSE |
| 18 | 583130 | 1 | TANK TO PUMP SUCTION HOSE |
| 19 | 583127 | 1 | SUPPLY TEE |
| 20 | 453113 | 5 | PUMP ELBOW |
| 21 | 583126 | 2 | STRAIGHT ADAPTER |
| 22 | 583081 | 2 | LARGE V-PUMP (BDP-21LH) |
| 22A | 583377 | | PUMP SEAL KIT - (BDP-21LH) |
| 24 | 453102 | 2 | PUMP KEY (5MM) |
| 25 | 583092 | 2 | PUMP PULLEY |
| 26 | 100257 | 4 | 1/4"-20 X 1 3/4" HEX BOLT |
| 27 | 823104 | 2 | PUMP CONTROL BAR |
| 28 | 453090 | 2 | CLAMP BAR |
| 29 | 104255 | 6 | 1/4"-20 NYLOC NUT |
| 30 | 583132 | 1 | SUCTION SCREEN |
| 31 | 583129 | 1 | FILTER ADAPTER |
| 32 | 423064 | 1 | FILTER HEAD |
| 33 | 423063 | 1 | HYDRO OIL FILTER (NO CROSS REF AVAIL) |
| 34 | 423165 | 1 | OIL BREATHER CAP |
| 35 | 583049 | 1 | OIL TANK |
| 36 | 423065 | 1 | OIL EYE |
| 37 | 523128 | 1 | TENSIONER SWIVEL |
| 38 | 583217 | 1 | PUMP DRIVE PULLEY (ENGINE) |
| 39 | 823026 | 1 | PUMP BELT |
| 40 | 363215 | 1 | TAPER LOCK HUB |
| 41 | 100252 | 2 | 1/4"-20 X 3/4" HEX BOLT |
| 42 | 107258 | 2 | 1/4" X 1/4" X 3/4" KEY |
| 43 | 583274 | 1 | FRONT DRIVE ADAPTER |
| 44A | 583042 | 1 | RIGHT HAND BRAKE ROD |
| 44B | 583044 | 1 | LEFT HAND BRAKE ROD |
| 45 | 153045 | 3 | 5/16" PUSH NUT |

72" Mid-Cut

Hydraulic Assembly (21L Series)

| # | PART NO. | QTY | DESCRIPTION |
|-----|----------|-----|------------------------------|
| 46 | 422049 | 1 | BRAKE CRANK |
| 47 | 373086 | 1 | BLADE SPACER |
| 48 | 523112 | 2 | 5/16" CLAMP COLLAR |
| 49 | 423130 | 2 | PARK BRAKE SWIVEL |
| 50 | 523024 | 2 | DECK DR. SPRING |
| 51 | 105258 | 2 | 5/16" FLAT WASHER |
| 52 | 104256 | 20 | 5/16" NYLOC NUT |
| 53 | 363177 | 2 | 3/8" PUSH NUT |
| 54 | 583460 | 2 | BRAKE ARM |
| 55A | 583038 | 1 | RIGHT HAND BRAKE CALIPER |
| 55B | 583039 | 1 | LEFT HAND BRAKE CALIPER |
| 55C | 583511 | X | BRAKE PAD KIT |
| 56 | 583040 | 2 | CALIPER MOUNT BRACKET |
| 57 | 100343 | 8 | 1/2"-13 X 9" HEX BOLT (72") |
| 58 | 104261 | 12 | 1/2"-13 NYLOC NUT |
| 59 | 100273 | 16 | 5/16"-18 X 1" HEX BOLT |
| 60 | 583204 | 1 | OIL COOLER CHANNEL |
| 61 | 582167 | 1 | OIL COOLER MOUNT - 3 CYL |
| 63 | 100252 | 6 | 1/4"-20 3/4" HEX BOLT |
| 64 | 100300 | 2 | 3/8"-16 X 3" HEX BOLT |
| 66 | 100303 | 2 | 3/8"-16 X 4" HEX BOLT |
| 67 | 582076 | 1 | PUMP PLATE |
| 68 | 104257 | 32 | 3/8" NYLOC NUT |
| 69 | 105260 | 13 | 3/8" FLAT WASHER |
| 70 | 823351 | 1 | PUMP DRIVE IDLER |
| 71 | 523277 | 1 | IDLER SPACER |
| 72 | 422025 | 1 | TENSIONER W/BUSHING |
| 72A | 523111 | X | BUSHING (SERVICE) |
| 73 | 107501 | 2 | 3/8"-16 X 2" CARRIAGE BOLT |
| 76 | 823030 | 2 | PUMP IDLER SUPPORT |
| 77 | 583144 | 1 | PUMP IDLER SPRING |
| 79 | 393070 | 1 | DRIVE IDLER BUSHING |
| 80 | 100327 | 4 | 1/2"-13 X 1 1/2" HEX BOLT |
| 81 | 583444 | 1 | OIL COOLER ADAPTER 45 DEGREE |

72" Hydro Small Pump Assembly



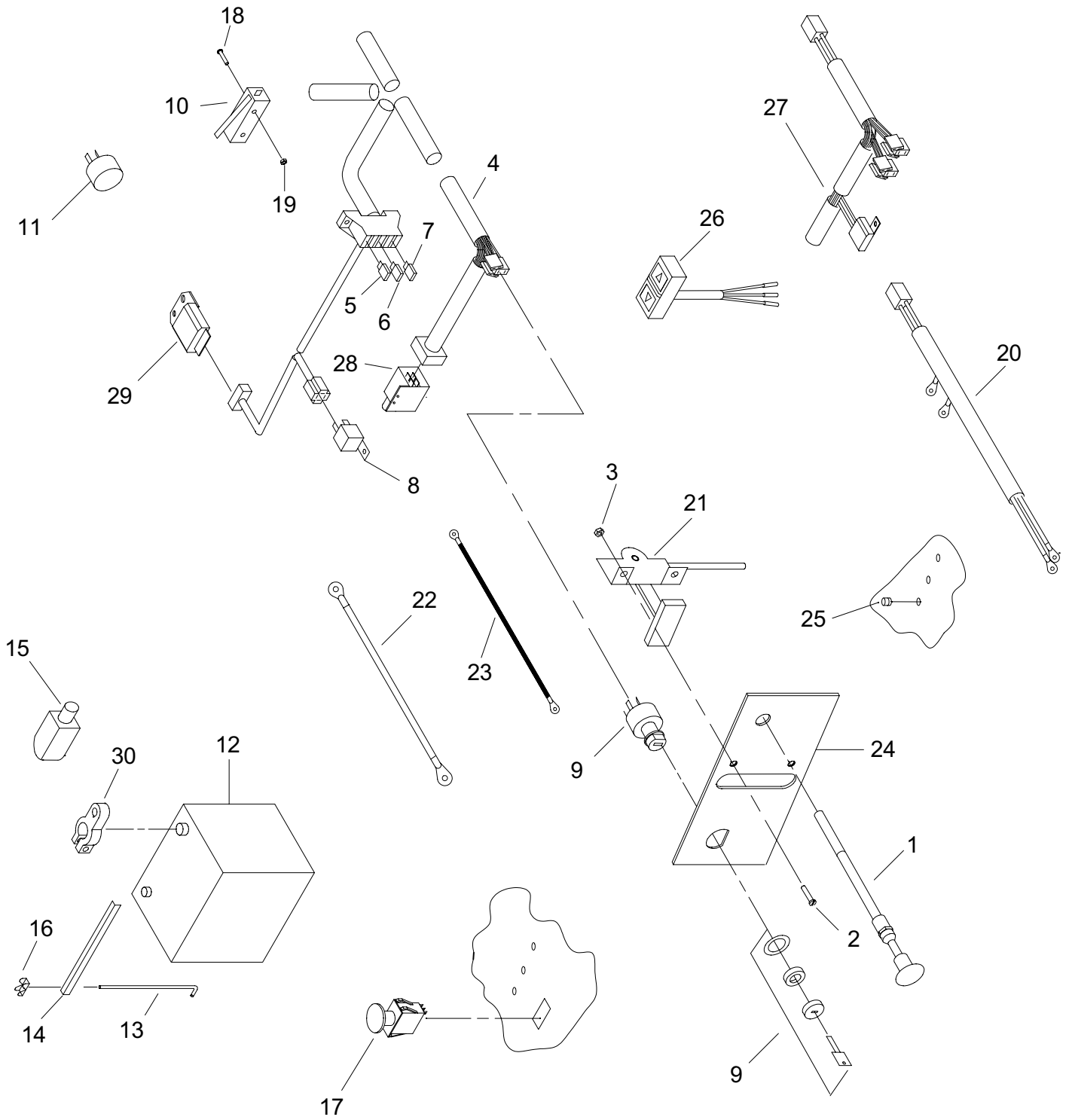
72" Mid-Cut Small Hydro Pump Assembly

| # | PART NO. | QTY | DESCRIPTION |
|-----|----------|-----|--|
| 1 | 103023 | 10 | LUG NUT |
| 2 | 104511 | 2 | WHEEL NUT |
| 3 | 583055 | 2 | DRIVE WHEEL ASSY (COMPLETE) |
| 3A | 583059 | X | DRIVE TIRE (24 X 12 X 12) |
| 3B | 583487 | X | BAR LUG TIRE (23 X 10.5 X 12) |
| 3C | 583058 | X | RIM W/ VALVESTEM |
| 4 | 582008 | 2 | WHEEL HUB |
| 5 | 583325 | 2 | WHEEL MOTOR |
| 6 | 582031 | 4 | MOTOR SPACER |
| 7A | 582002 | 1 | RIGHT HAND MOTOR MOUNT |
| 7B | 582004 | 1 | LEFT HAND MOTOR MOUNT |
| 8 | 523058 | 4 | 90 DEGREE MOTOR ADAPTER |
| 9 | 583462 | 3 | HOSE WHEEL DRIVE SHORT MC 72 (21" LG) |
| 10 | 583461 | 1 | HOSE WHEEL DRIVE LONG MC 72 (26 3/4" LG) |
| 13 | 583241 | 2 | PUMP TO PUMP HOSE |
| 16 | 453129 | 1 | PUMP TO TANK SUPPLY HOSE |
| 17 | 453106 | 2 | SWIVEL TEE |
| 18 | 583391 | 2 | 90 DEGREE INLET ADAPTER |
| 19 | 583126 | 4 | STRAIGHT ADAPTER |
| 20 | 453074 | 2 | 90 DEGREE ADAPTER |
| 21 | 583491 | 2 | PUMP-V (10A) |
| 21A | 583377 | X | PUMP SEAL KIT - (10A) |
| 22 | 583382 | 2 | PUMP PULLEY |
| 23 | 423178 | 2 | TAPER HUB |
| 24 | 453102 | 2 | PUMP KEY |
| 25 | 100252 | 2 | 1/4"-20 X 3/4" HEX BOLT |
| 26 | 823104 | 2 | CONTROL BAR |
| 27 | 100257 | 4 | 1/4"-20 X 1 3/4" HEX BOLT |
| 28 | 453090 | 2 | CLAMP BAR |
| 29 | 104255 | 6 | 1/4"-20 NYLOC NUT |
| 30 | 583132 | 1 | SUCTION SCREEN |
| 31 | 583442 | 1 | FILTER ADAPTER (61" & 72") |
| 32 | 423064 | 1 | FILTER HEAD |
| 33 | 423063 | 1 | HYDRO OIL FILTER (NO CROSS REF AVAIL) |
| 34 | 423165 | 1 | OIL BREATHER CAP (61" & 72") |
| 35 | 583049 | 1 | OIL TANK (61" & 72") |
| 36 | 423065 | 1 | OIL EYE |
| 37 | 583217 | 1 | PUMP DRIVE PULLEY |
| 38 | 583385 | 1 | PUMP BELT |
| 39A | 583042 | 1 | RIGHT HAND BRAKE ROD (61" & 72") |
| 39B | 583044 | 1 | LEFT HAND BRAKE ROD (61" & 72") |
| 40 | 422049 | 1 | BRAKE CRANK |
| 41 | 373086 | 1 | SPACER |
| 42 | 104256 | 6 | 5/16" PUSH NUT |
| 43 | 104256 | 20 | 5/16" NYLOC NUT |
| 44 | 105258 | 2 | 5/16" FLAT WASHER |
| 45 | 523024 | 2 | SPRING |
| 46 | 423130 | 2 | PARK BRAKE SWIVEL |
| 47 | 423112 | 2 | 5/16" CLAMP COLLAR |
| 48 | 363177 | 2 | 3/8" PUSH NUT |

72" Mid-Cut Small Hydro Pump Assembly

| # | PART NO. | QTY | DESCRIPTION |
|-----|----------|-----|----------------------------|
| 49 | 583460 | 2 | BRAKE ARM |
| 50A | 583038 | 1 | RIGHT HAND BRAKE CALIPER |
| 50B | 583039 | 1 | LEFT HAND BRAKE CALIPER |
| 50C | 583511 | X | BRAKE PAD KIT |
| 51 | 583040 | 2 | CALIPER MOUNT |
| 52 | 100343 | 8 | 1/2"-13 X 9" HEX BOLT |
| 53 | 100300 | 2 | 3/8"-16 X 3" HEX BOLT |
| 54 | 104257 | 32 | 3/8" NYLOC NUT |
| 56 | 583328 | 1 | PUMP PLATE |
| 58 | 105260 | 13 | 3/8" FLAT WASHER |
| 59 | 823351 | 1 | FLAT IDLER |
| 60 | 523277 | 1 | IDLER SPACER |
| 61 | 422025 | 1 | TENSIONER W/BUSHING |
| 61A | 523111 | X | BUSHING (SERVICE) |
| 62 | 107501 | 2 | 3/8"-16 X 2" CARRIAGE BOLT |
| 65 | 373089 | 2 | RETAINING WASHER |
| 66 | 393070 | 1 | IDLER PIVOT |
| 68 | 583144 | 1 | PUMP IDLER SPRING |
| 70 | 109007 | 2 | 3/8"-16 WHIZLOCK NUT |
| 71 | 523277 | 1 | SPACER |
| 73 | 583274 | 1 | FRONT DRIVE ADAPTER |

72" Mid-Cut Electrical Section



72" Mid-Cut

Electrical Section - Diesel

| # | PART NO. | QTY | DESCRIPTION |
|----|----------|-----|---------------------------------|
| 1 | X | X | NOT INSTALLED - CHOKE CABLE |
| 2 | 101039 | 6 | #10-24 X 5/8" PAN HEAD BOLT |
| 3 | 104252 | 6 | #10-24 NYLOC NUT |
| 4 | 583277 | 1 | WIRE HARNESS - 950D-MC |
| 5 | 583502 | 1 | 30 AMP FUSE |
| 6 | 523146 | 1 | 15 AMP FUSE |
| 7 | 583502 | 1 | 30 AMP FUSE |
| 8 | 523042 | 3 | RELAY |
| 9 | 423027 | 1 | IGNITION SWITCH ASSEMBLY |
| 10 | 823193 | 1 | NEUTRAL SWITCH |
| 11 | 823194 | 1 | ALARM |
| 12 | 523050 | 1 | 12 VOLT BATTERY |
| 13 | 423172 | 2 | BATTERY HOLD DOWN |
| 14 | 583403 | 1 | BATTERY ANGLE - IL3 |
| 15 | 583409 | 1 | POSITIVE BATTERY BOOT |
| 16 | 109017 | 2 | 1/4"-20 WING NUT |
| 17 | 523031 | 1 | PTO SWITCH |
| 18 | 101252 | 2 | #5-40 X 1" SCREW |
| 19 | 104520 | 2 | #5-40 NUT |
| 20 | 583275 | 1 | ENGINE WIRE HARNESS DSL |
| 21 | 583057 | 1 | THROTTLE CONTROL |
| 22 | 823196 | 1 | POSITIVE CABLE |
| 23 | 823197 | 1 | NEGATIVE CABLE |
| 24 | 583037 | 1 | CONTROL PANEL |
| 25 | 523036 | 3 | WARNING LIGHT |
| 26 | 583411 | 1 | ELECTRIC LIFT SWITCH |
| 27 | 583412 | 1 | ELECTRIC LIFT HARNESS |
| 28 | 523034 | 1 | PARK SWITCH |
| 29 | 583423 | 1 | TIME DELAY MODULE |
| 30 | 583429 | 2 | BATTERY TERMINAL |
| 31 | 583351 | 2 | ELECTRIC LIFT RELAY (5 PRONG) |
| 32 | 583238 | 1 | RELAY MOUNT |

72" Mid-Cut Decals



1

ENCORE

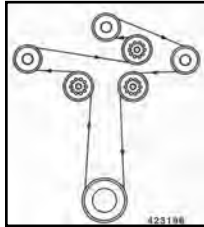
2,3,4



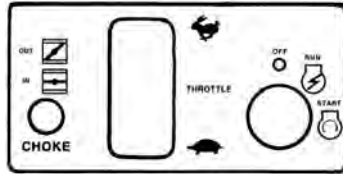
5



6



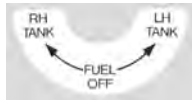
7



8



9



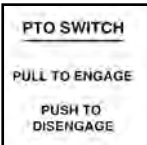
12

PROWLER

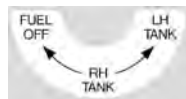
14,21



10



11



17



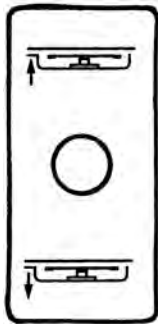
18



19

PRO 72

15



16



23



24

DIESEL

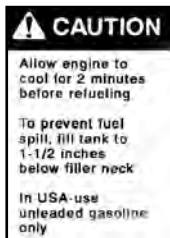
20



25



26



22



28



29



27



30



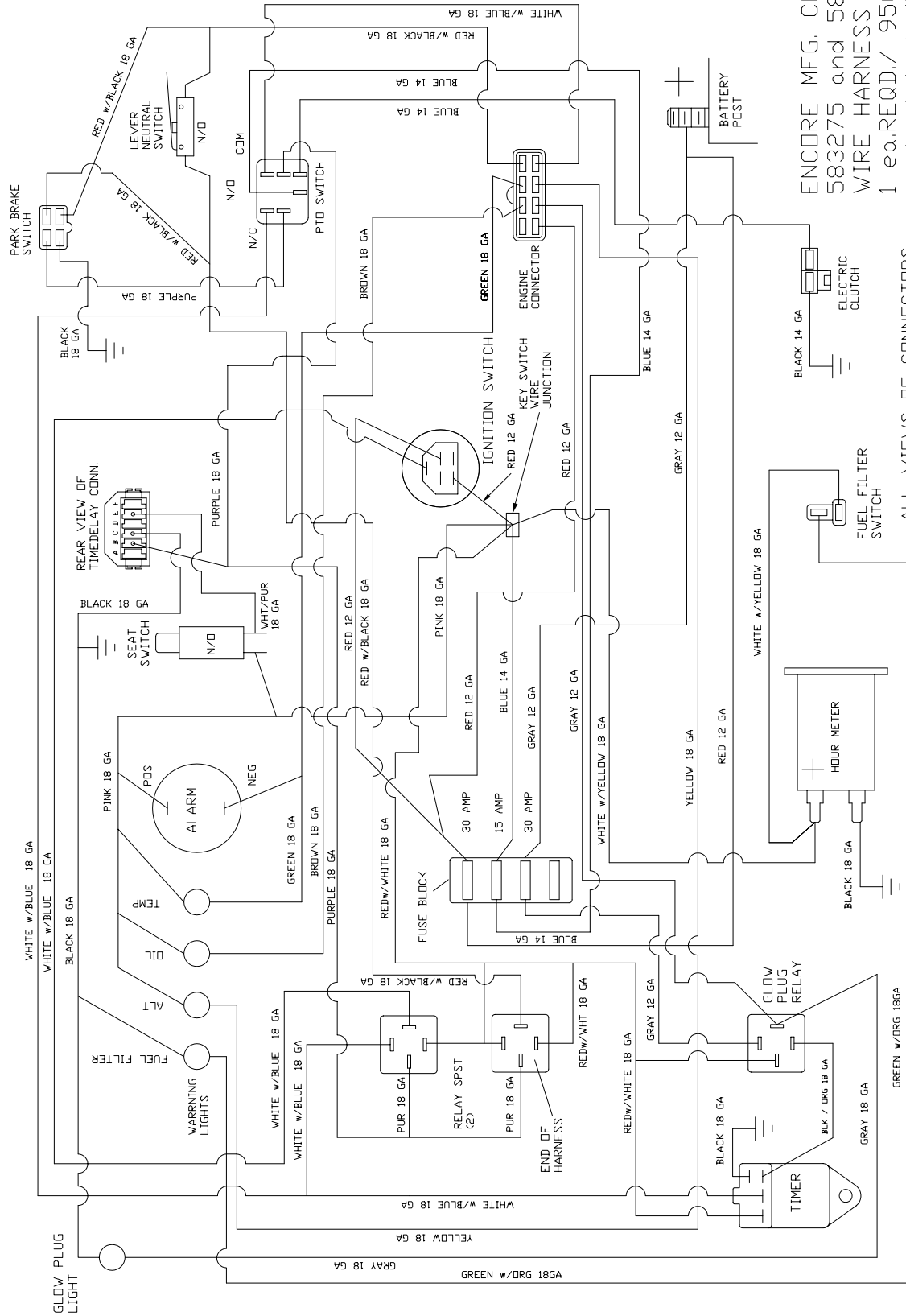
31

72" Mid-Cut

Decal List

| # | PART NO. | DESCRIPTION |
|----|----------|-----------------------------------|
| 1 | 363023 | DANGER DECAL |
| 2 | 363231 | LARGE ENCORE LABEL |
| 3 | 363243 | ENCORE DECAL |
| 4 | 363265 | SMALL ENCORE LABEL |
| 5 | 423155 | RIDER CAUTION DECAL |
| 6 | 423156 | PARK LEVER DECAL |
| 7 | 423196 | BELT ROUTING DECAL |
| 8 | 423197 | CONTROL DECAL |
| 9 | 453010 | OIL DECAL |
| 10 | 523020 | LIGHT DECAL |
| 11 | 523021 | PTO DECAL |
| 12 | 583023 | LABEL – FUEL VALVE - GAS |
| 13 | 583076 | PROWLER DECAL (LARGE CAT DECAL) |
| 14 | 583088 | PROWLER - BLK DECAL |
| 15 | 583193 | PRO-72" DECAL |
| 16 | 583232 | DECAL – UP- DOWN |
| 17 | 583280 | FUEL VALVE LABEL – DSL |
| 18 | 583372 | GLOW PLUG DECAL |
| 19 | 583416 | CUT GAGE DECAL |
| 20 | 583441 | DIESEL LABEL |
| 21 | 583443 | PROWLER DECAL - RED |
| 22 | 823318 | FUEL TANK DECAL |
| 23 | 823319 | TIP OVER – WARNING |
| 24 | 823320 | BATTERY - WARNING DECAL |
| 25 | 823321 | OPERATING - WARNING |
| 26 | 823322 | ROTATING PARTS – DANGER |
| 27 | 823323 | ROTATING PARTS - WARNING |
| 28 | 823324 | SHIELD - DANGER |
| 29 | 823325 | THROWN OBJECTS - DANGER |
| 30 | 823326 | DISCHARGE - WARNING |
| 31 | 823327 | DISCHARGE - DANGER |

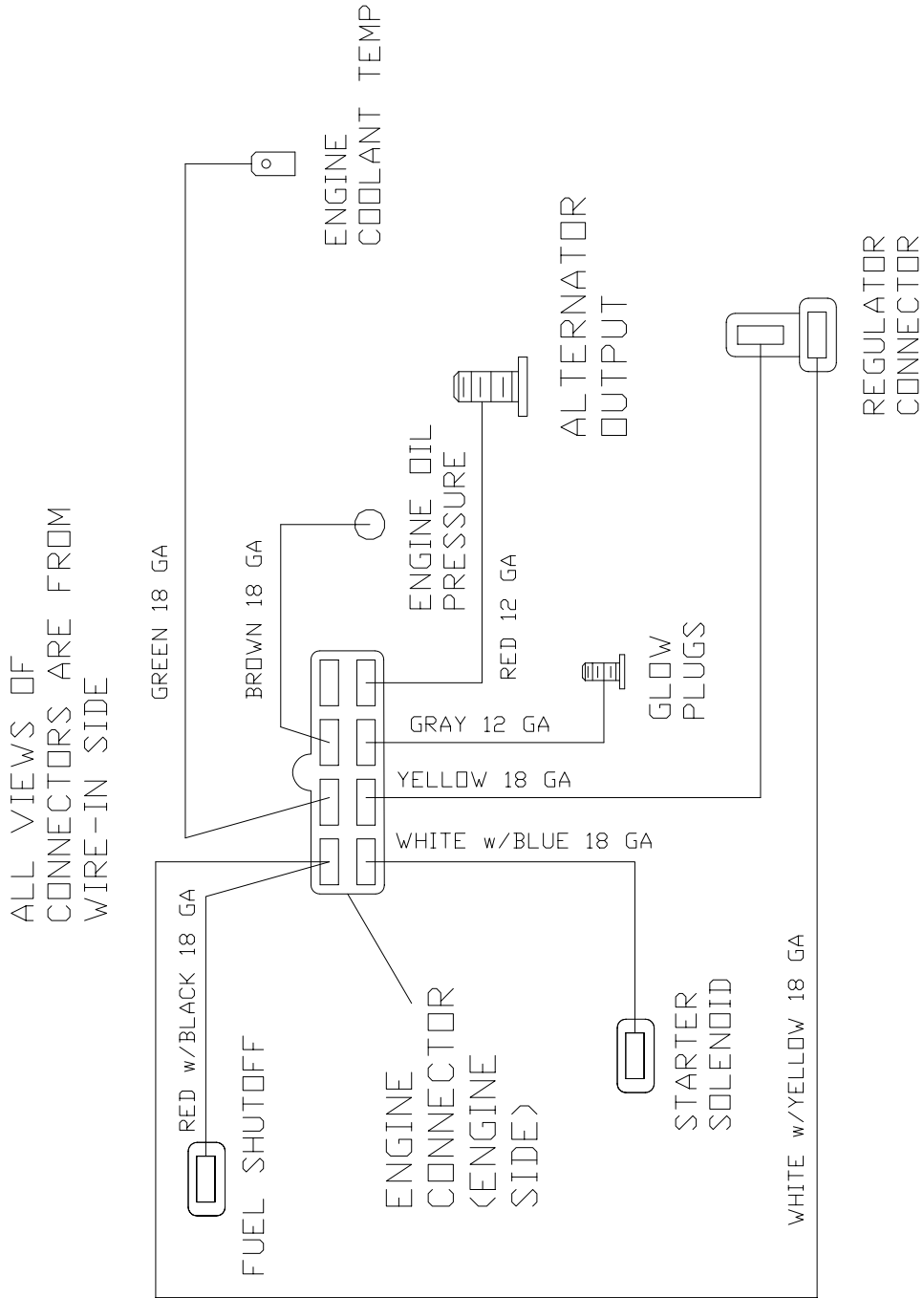
**72" MID-CUT
ELECTRICAL
SCHEMATIC
SECTION**



ENCORE MFG. CO., INC.
 583275 and 583277
 WIRE HARNESS
 1 ea. REQD./ 950D FC & MC
 - electrical diagram -

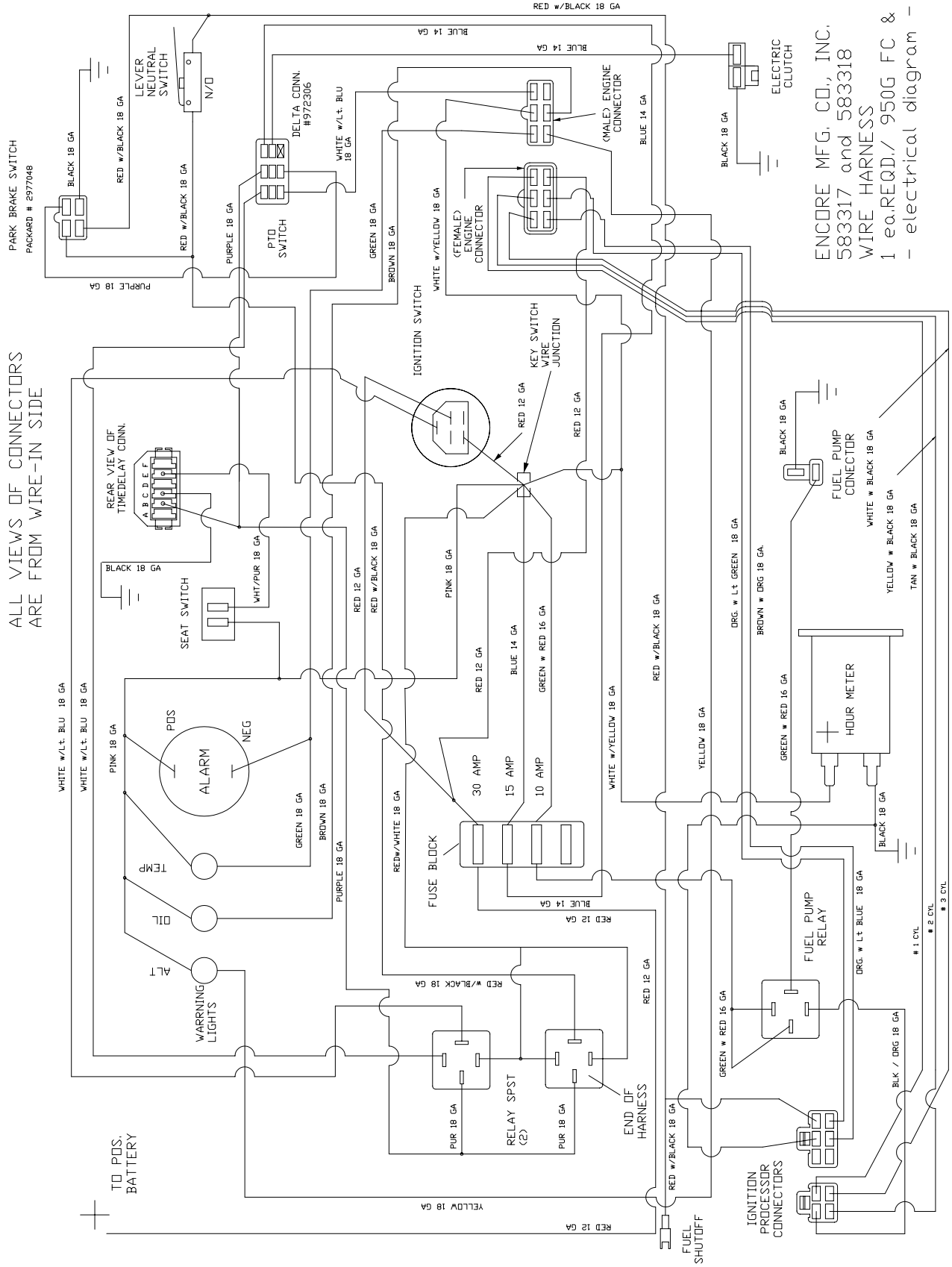
ALL VIEWS OF CONNECTORS
 ARE FROM WIRE-IN SIDE

ENCORE MFG. CO., INC.
 583276 ENGINE WIRE
 HARNESS
 1 REQD./ 950D
 - electrical diagram -



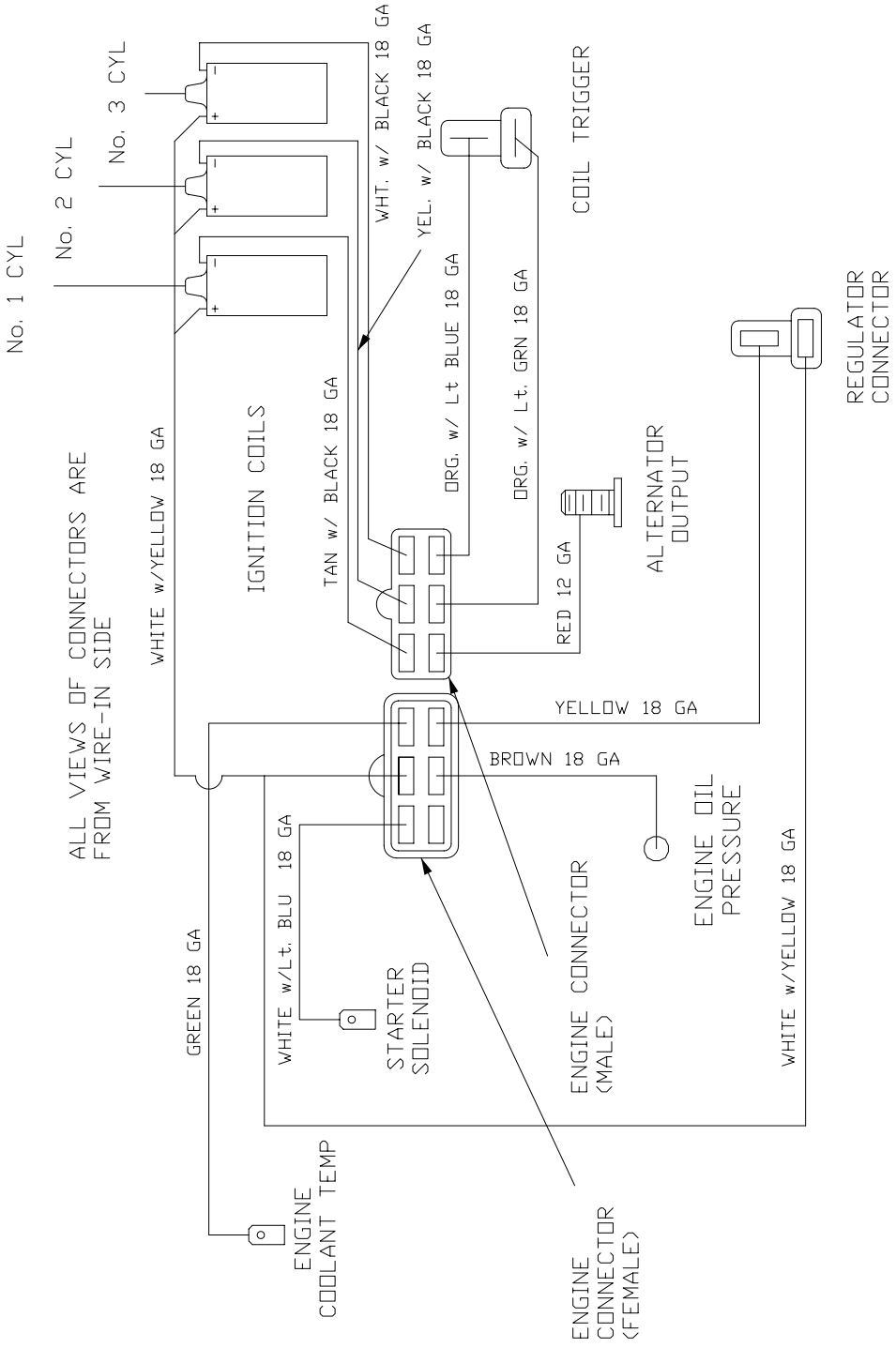
ENCORE MFG. CO., INC.
 583276 ENGINE WIRE
 HARNESS
 1 REQD./ 950D
 - electrical diagram -

ALL VIEWS OF CONNECTORS
ARE FROM WIRE-IN SIDE



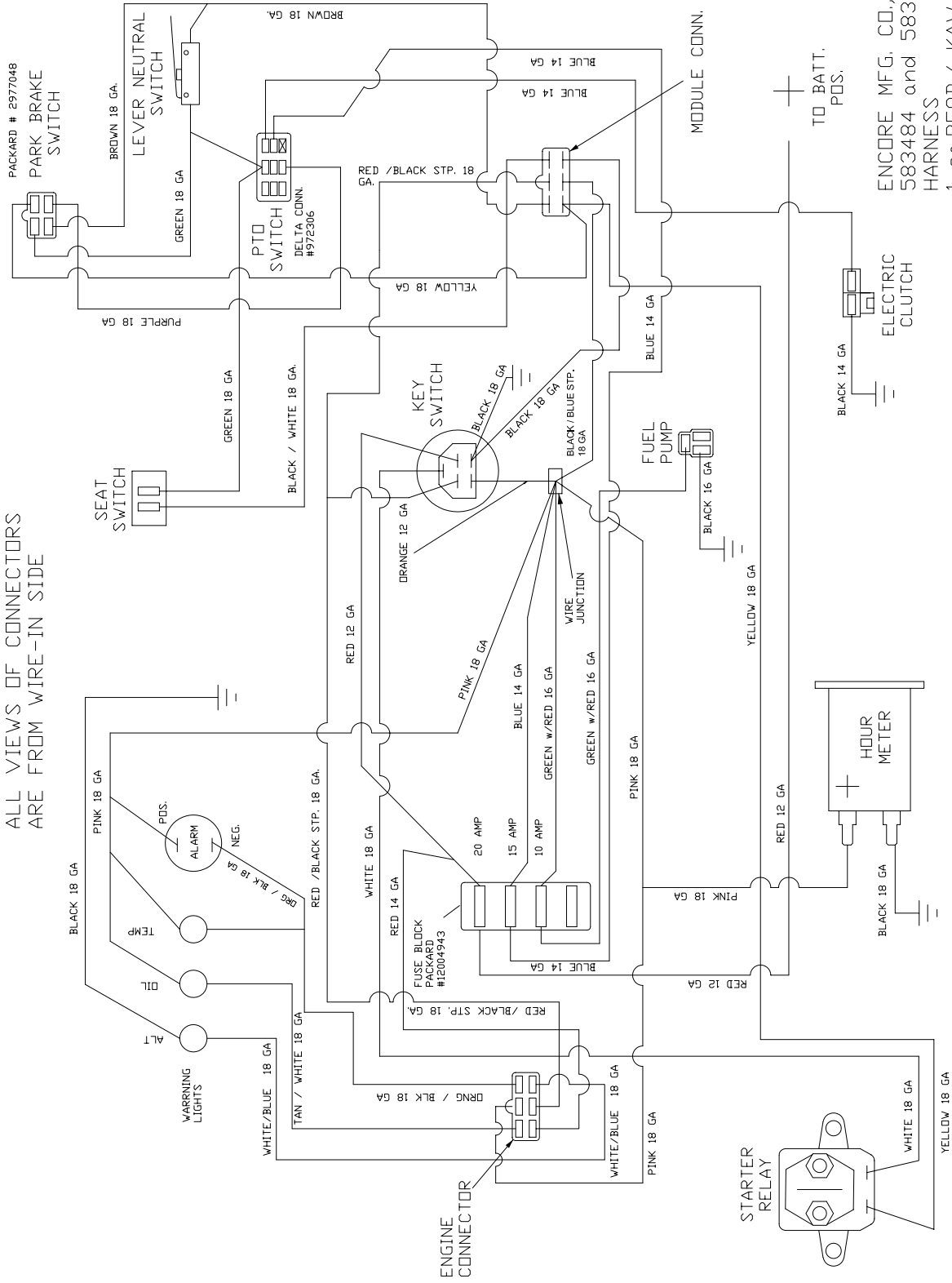
ENCORE MFG. CO., INC.
583317 and 583318
WIRE HARNESS
1 ea.REQD./ 950G FC & MC
- electrical diagram -

1 CYL
2 CYL
3 CYL



ENCORE MFG. CO., INC.
 583319 ENGINE WIRE HARNESS
 1 REQD./ 950G
 - electrical diagram -

ALL VIEWS OF CONNECTORS
ARE FROM WIRE-IN SIDE



ENCORE MFG. CO., INC.
583484 and 583492 WIRE
HARNES
1 ea.REQD./ KAW 27hp MC & FC
- electrical diagram -

Notes:

Notes:

Notes:

