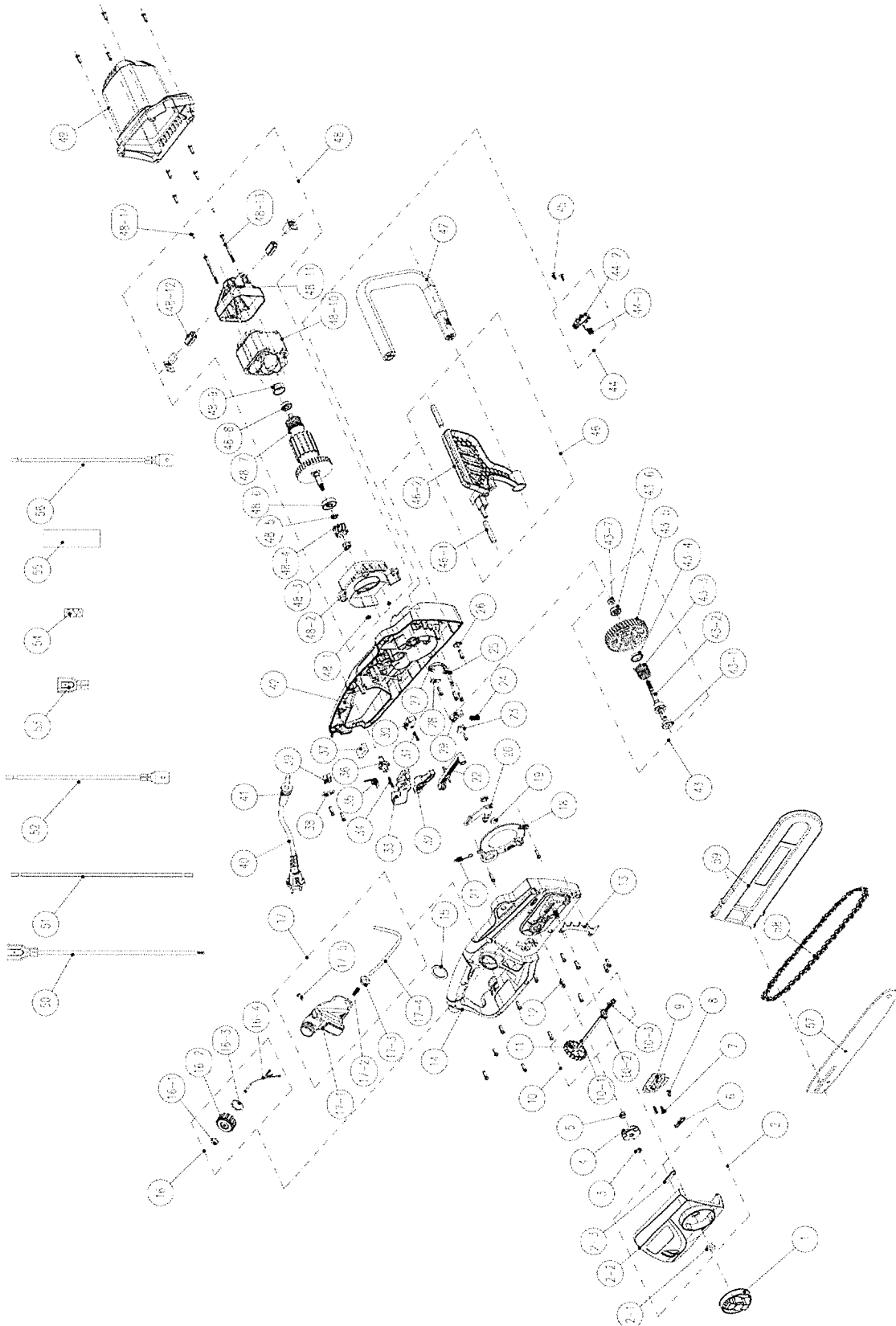


PARTS

Model: CSE15-M



No.	Part #	Description	Qty.
1	202028000087	Bar Adjustment Locking Knob	1
2	199001000490	Cover Assembly	1
2-1	207289900054	Axle Bushing	1
2-2	201007000068	Cover	1
2-3	202999001493	Sealing Ring	1
3	207340100049	Retaining Ring	1
4	201035000003	Sprocket	1
5	207019900029	Spring	1
6	207279900039	Sealing Ring	1
7	207310100007	Self-tapping Screw	2
8	207310100046	Self-tapping Screw	31
9	201999001224	Insulation Gasket	1
10	199117000032	Adjusting Rod Assembly	1
11	202028000088	Chain Tensioning Wheel	1
12	207310100195	Self-tapping Screw	2
13	201999000500	Buffer Board	1
14	201050000109	Right Housing	1
15	202999001254	Rubber Cushion	1
16	199123000421	Oil Tank Cap Assembly	1
16-1	201058000241	Oil Tank Cap Cover	1
16-2	202165000572	Oil Tank Cap	1
16-3	207270100004	Sealing Ring	1
16-4	202014000102	Hook	1
17	199124000176	Oil Tank Assembly	1
17-1	202164000118	Oil Tank	1
17-2	207010200001	Spring	1
17-3	207279900044	Sealing Ring	1
17-4	302000002	Translucent Oil Tube	0.19M
18	202079000022	Dust Cover	1
19	207280100004	Axle Bushing	1
20	201028000007	Braking Pad	1
21	207019900182	Brake spring	1
22	202022000140	Switch Link Rod	1
23	201057000026	Pressboard	1
24	207019900044	Spring	1
25	199999000302	Oil Nozzle Set	1
26	207059900050	Brake washer	1
27	302000002	Translucent Oil Tube	1
28	201057000187	Pressboard	1
29	202071000016	Positioning Block	1
30	207189900087	Micro Switch	1
31	207310100181	Self-tapping Screw	1
32	202022000138	Intermediate Link Rod	1
33	201042000001	Switch Button	1
34	207019900174	Switch Torsion Spring	1
35	207019900031	Push Button Spring	1
36	201042000003	Anti-self-locking Button	1

No.	Part #	Description	Qty.
37	207069900003	Two-pin Capacitor	1
38	207089900003	Cord Pressboard	1
39	201999001072	Terminal Set	1
40	207029900259	Power Cord & Plug	1
41	207090100004	Cable Sheath	1
42	201050000108	Left Housing	1
43	199101000099	Output Shaft Assembly	1
43-1	207390100050	6900 Bearing	1
43-2	201025000054	Output Shaft	1
43-3	207019900181	Brake Torsion Spring	1
43-4	207289900003	Axle Bushing	1
43-5	202002000024	Output Shaft Gear	1
43-6	207390100043	608Z Bearing	1
43-7	207320100088	Hexagon Lock Nut	1
44	199010000043	Oil Pump Assembly	1
44-1	207019900203	Oil Pump Extension Spring	1
44-2	199010000091	Oil Pump	1
45	207310100108	Self-tapping Screw	2
46	201046000024	Front Hand Guard Assembly	1
46-1	201031000014	Adding Weight Piece	2
46-2	201046000024	Front Hand Guard	1
47	201054000020	Front Handle	1
48	101001000752	Motor Assembly	1
48-1	207320100074	Hexagon Lock Nut	2
48-2	202999001547	Windshield	1
48-3	207320100061	Hexagon Flange Nut	1
48-4	201004000321	Motor Gear	1
48-5	201004000276	Motor Gear Bushing	1
48-6	207390100085	Bearing 6200-2RS	1
48-7	106001000128	Rotor Assembly	1
48-8	207390100043	Bearing 608Z	1
48-9	202032000007	Bearing Bushing	1
48-10	107001000093	Stator Assembly	1
48-11	202031000379	Rear Bracket	1
48-12	199102000008	Carbon Brush Holder Assembly	2
48-13	207229900037	Stator Screw	2
48-14	207310100169	Self-tapping Screw	2
49	201058000237	Motor Cover	1
50	207039900120	Connection Wire	2
51	207031300011	Connection Wire	1
52	207039900080	Connection Wire	1
53	207409900008	Female Terminal	3
54	207409900032	Copper Tape	0.24
55	301200006	Heat Shrink Tube	0.1
56	207039900121	Connection Wire	2
57	205001000105	Guide Bar	1
58	205001000024	Saw Chain	1
59	202009000169	Bar Sheath	1