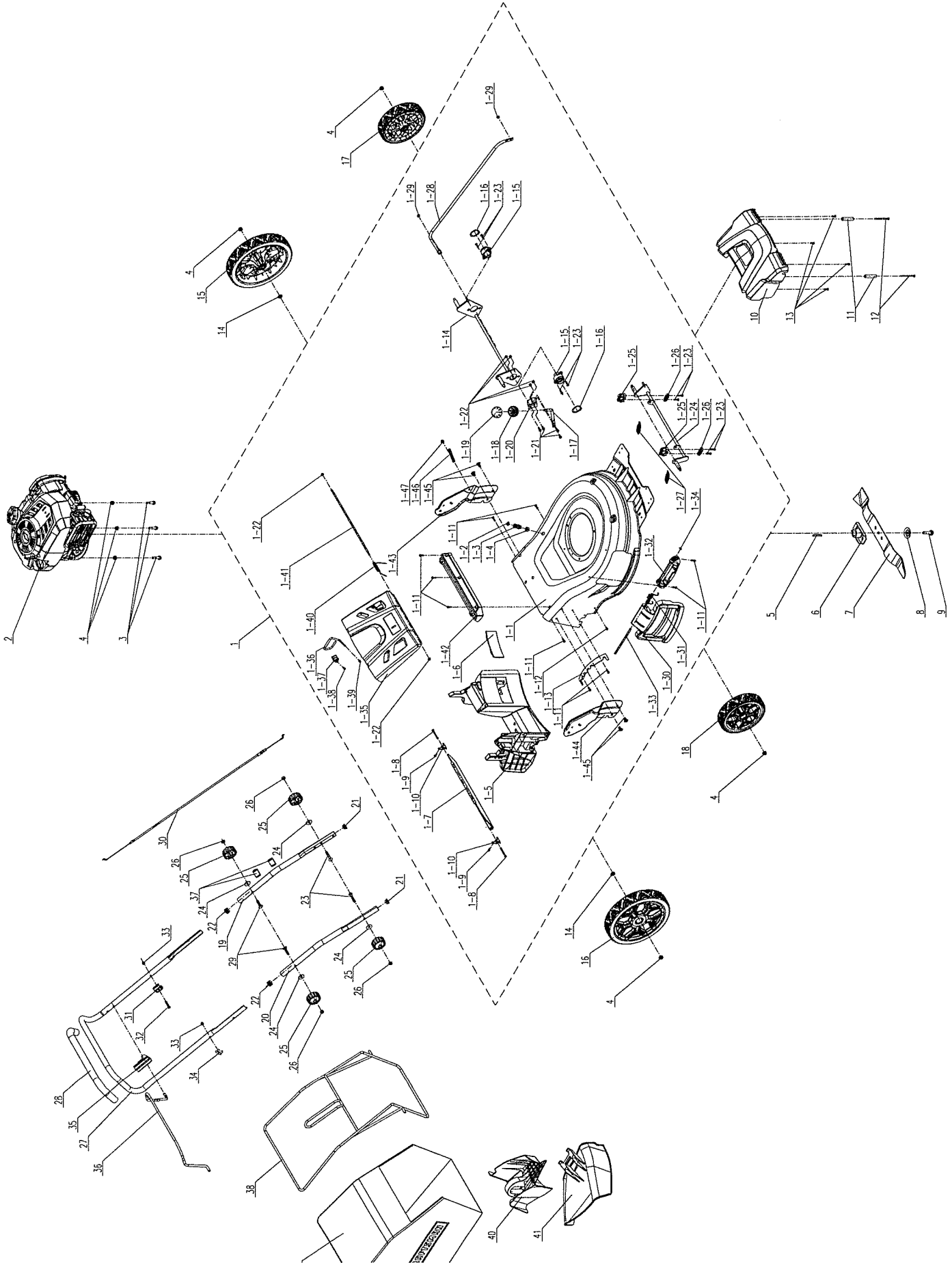


# PARTS LIST

## SENIX 21" Push Black LSPGBS-M2



# SENIX 21" Push Black - LSPGBS-M2

Ref. No.	Part No.	Description
1	199002000820	Case assembly
1-1	201050000129	cabinet
1-2	8208-910101-0000020	O Type Sealing Ring
1-3	201052000049	Joint
1-4	8207-910102-0000000	Pipe thread nut
1-5	202065000152	Pedestal
1-6	202029000179	Press plate
1-7	202006000102	Baffle
1-8	8SJGB50-50D	Screw
1-9	8SJGN04-10D	Screw
1-10	8187-510804-0000000	Gear fix plate
1-11	8SJGB50-16D	Tapping Screw
1-12	8SJAB50-08D	Tapping Screw
1-13	201074000025	Gear Plate
1-14	199086000197	Wheel axle assembly
1-15	202031000449	Holder
1-16	8CC-34B	Elastic Ring For Shaft
1-17	201132000031	The High Bar
1-18	202156000389	Under The Cover
1-19	202138000763	Loam Cake
1-20	8321-910601-0000000	Turn U The S rim Blade
1-21	8SQDD05-16D	Flange bolt
1-22	8NE-05D01	Lock nut
1-23	8SJGB50-20D	tapping screw
1-24	199086000199	Wheel axle assembly
1-25	202090000187	Rear Fixed Seat
1-26	202029000208	Press plate
1-27	207010500002	Tension Spring
1-28	201053000087	Connecting Rod
1-29	8NH-06Q	hex lock nut
1-30	202030001438	Cover
1-31	8342-911602-0000000	Side Baffle Spring
1-32	202090000186	Rear Fixed Seat
1-33	8081-911601-0000000	Lateral Line Shaft
1-34	8CE-06Q	Open ring
1-35	202030001450	Cover
1-36	201059000370	Holder
1-37	202029000207	Press plate
1-38	8SJGB40-16D	pan head tapping screw
1-39	8332-911601-0000120	Rubber Sleeve
1-40	8342-517702-0000000	Rear Cover Torsional Spring
1-41	201026000361	Shaft
1-42	202090000185	Rear Fixed Seat
1-43	201084000040	Connection Piece
1-44	201084000041	Connection Piece
1-45	207221100001	bolt
1-46	8281-911801-0000100	Winding Clamp
1-47	8SQDD06-08D8.8	Hex flange machine screw

Ref. No.	Part No.	Description
2	205001000325	Engine Head Assembly
3	8SQDD08-35D	Hex flange bolt
4	8NE-08D01	lock nut
5	8205-910803-0000000	Long crankshaft
6	201101000060	Rear Fixed Seat
7	201045000246	blade
8	9202-915101-0100000	Dish gasket
9	8206-910601-0000000	Blade bolt (BS)
10	202030001785	Cover
11	8334-911603-0000120	Cushion Covers
12	8SJGB50-70D	Pan head tapping screw
13	8SJGB50-16D	Pan head tapping screw
14	8224-510401-0000000	Shaft Sleeve
15	207150100021	Wheel
16	207150100022	Wheel
17	207150100023	Wheel
18	207150100024	Wheel
19	201139000093	Push Rod
20	201139000094	Push Rod
21	8301-911601-0000120	Armrest Plug
22	202015000343	Pipe Sleeve
23	207220900020	Square Neck Bolt
24	207050100037	Flat Washer
25	8313-910101-0000120	Handle lever fixing knob
26	207320100157	Hex Nut
27	201139000095	Push Rod
28	8331-911601-0000120	Tube For Bike Handle
29	207220900019	Square Neck Bolt
30	199081000130	Cable assembly
31	8141-911602-0100120	Stay Seat
32	8SFD06-35Q	Hexagon Bolt
33	8207-911809-0000000	Cap Nut
34	201096000010	Fixed rod
35	8141-911601-0000120	Connecting rod mount
36	201120000077	Tie Rod
37	202157000125	Line Deduction
38	201059000377	Holder
39	299001000110	Net Bag
40	202072000019	Stifled Piece
41	202030001118	Cover