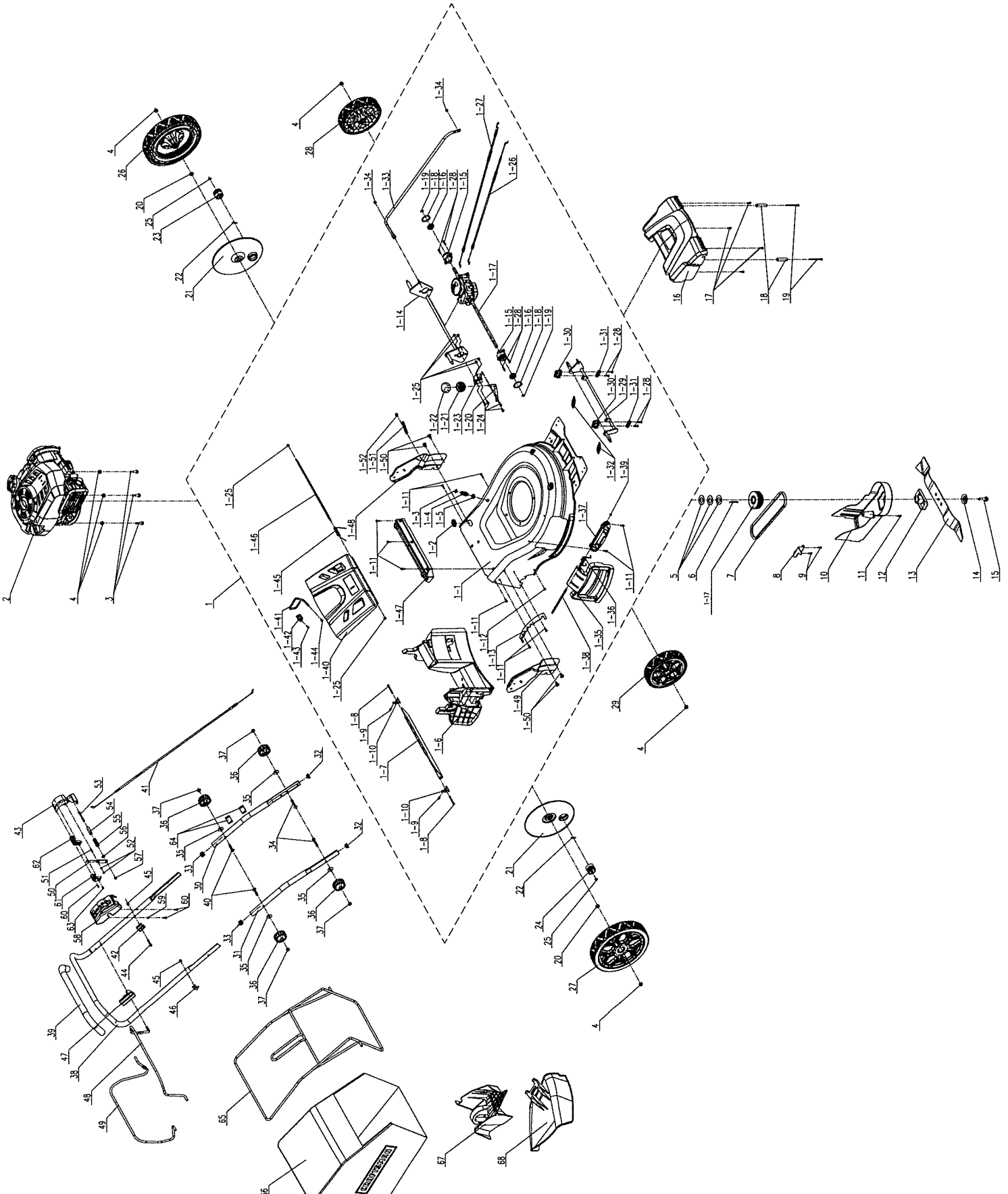


# PARTS LIST

## SENIX 21" 4-speed Black LSSGBS-H



# SENIX 21" 4-speed Black LSSGBS-H

Ref. No.	Part No.	Description
1	199002000821	Case assembly
1-1	201050000131	Cabinet
1-2	8204-911810-0100120	Pull Card Set
1-3	8208-910101-0000020	O Type Sealing Ring
1-4	201052000049	Joint
1-5	8207-910102-0000000	Pipe thread nut
1-6	202065000152	Pedestal
1-7	202006000102	Baffle
1-8	8SJGB50-50D	Pan head tapping screw
1-9	8SJGN04-10D	Triple Combination Screw
1-10	8187-510804-0000000	Rear gear fixing plate
1-11	8SJGB50-16D	Pan Head Tapping Screw
1-12	8SJAB50-08D	Pan Head Tapping Screw
1-13	201074000025	Gear Plate
1-14	199086000197	Wheel axle assembly
1-15	202031000449	Holder
1-16	8210-910602-0000000	Stamping Bearings
1-17	199134000010	Bootstrap Component
1-18	8CC-34B	Elastic Ring For Shaft
1-19	8CC-12B	Elastic Ring For Shaft
1-20	201132000031	High Bar
1-21	202156000389	Cover
1-22	202138000763	Loam Cake
1-23	8321-910601-0000000	Spring Blade
1-24	8SQDD05-16D	Hexagon flange bolt
1-25	8NE-05D01	Flange Locking Nut
1-26	199081000132	Cable assembly
1-27	199081000131	Cable assembly
1-28	8SJGB50-20D	Pan head tapping screw
1-29	199086000199	Wheel axle assembly
1-30	202090000187	Rear Fixed Seat
1-31	202029000208	Press plate
1-32	207010500002	Tension Spring
1-33	201053000087	Connecting Rod
1-34	8NH-06Q	Hex lock nut
1-35	202030001438	Cover
1-36	8342-911602-0000000	Side Baffle Spring
1-37	202090000186	Rear Fixed Seat
1-38	8081-911601-0000000	Lateral Line Shaft
1-39	8CE-06Q	Open Ring
1-40	202030001450	Cover
1-41	201059000370	Holder
1-42	202029000207	Press plate
1-43	8SJGB40-16D	Pan head tapping screw
1-44	8332-911601-0000120	Rubber Sleeve
1-45	8342-517702-0000000	Rear Cover Torsional Spring
1-46	201026000361	Shaft
1-47	202090000185	Rear Fixed Seat
1-48	201084000040	Connection Piece
1-49	201084000041	Connection Piece
1-50	207221100001	Bolt
1-51	8281-911801-0000100	Winding Clamp
1-52	8SQDD06-08D8.8	Hex flange machine screw
2	205001000326	Engine Head Assembly
3	8SQDD08-35D	Hex flange bolt
4	8NE-08D01	Lock nut
5	8202-911601-0000000	Flat gasket
6	8205-910803-0000000	Long crankshaft
7	207120100002	U Bolt

Ref. No.	Part No.	Description
9	8SJGB50-20D	Pan head tapping screw
10	202012000472	Safety mask
11	8SJGN05-16D	Triple Combination Screw
12	201101000060	Rear Fixed Seat
13	201045000246	Blade
14	9202-915101-0100000	Dish gasket
15	8206-910601-0000000	Blade bolt (B5)
16	202030001785	Cover
17	8SJGB50-16D	Pan head tapping screw
18	8334-911603-0000120	Cushion Covers
19	8SJGB50-70D	Pan head tapping screw
20	8224-510401-0000000	Shaft Sleeve
21	202079000031	Dust cover
22	8091-910101-0000000	Gear Pin
23	201004000439	Right Gear
24	201004000438	Left Gear
25	8CC-12B	Elastic Ring For Shaft
26	199088000152	Wheel Component
27	199088000153	Wheel Component
28	207150100023	Wheel
29	207150100024	Wheel
30	201139000093	Push Rod
31	201139000094	Push Rod
32	8301-911601-0000120	Armrest Plug
33	202015000343	Pipe Sleeve
34	207220900020	Square Neck Bolt
35	207050100037	Flat Washer
36	8313-910101-0000120	Handle lever fixing knob
37	207320100157	Hex Nut
38	201139000096	Push Rod
39	8331-911601-0000120	Tube For Bike Handle
40	207220900019	Square Neck Bolt
41	199081000130	Cable assembly
42	8141-911602-0100120	Stay Seat
43	8187-911604-0100000	Speed control gear
44	85FDD06-35Q	Hexagon Bolt
45	8207-911809-0000000	Cap Nut
46	201096000010	Fixed rod
47	8141-911601-0000120	Connecting rod mount
48	201120000077	Tie Rod
49	201120000078	Tie Rod
50	8087-911607-0100000	Speed lever
51	207420300003	Countersunk head screw
52	8NH-04Q	Hex lock nut
53	207430100011	Hexagon Bolt
54	8334-911605-0100000	Shaft Sleeve
55	8342-660201-0000000	Nozzle pressure spring
56	8201-923101-0100000	Limit washer
57	8NH-06Q	Hex lock nut
58	8020-911608-0100120	Speed Regulating Box
59	207330100097	Flat Washer
60	8SJAB40-20Q	Pan Head Tapping Screw
61	202024002742	Handle
62	202024002741	Handle
63	8SJAB40-14Q	Pan Head Tapping Screw
64	202157000125	Line Deduction
65	201059000377	Holder
66	299001000110	Net Bag