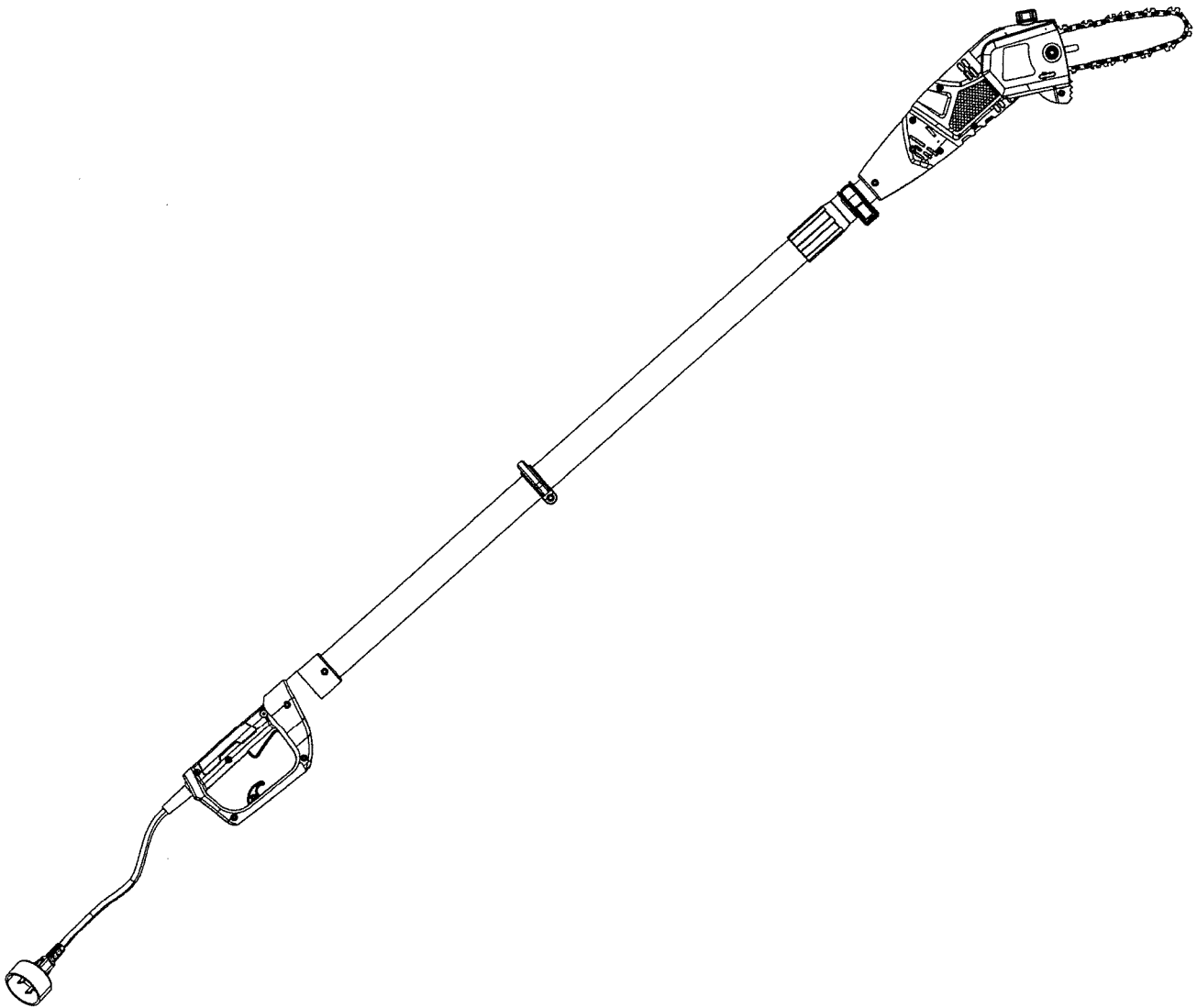




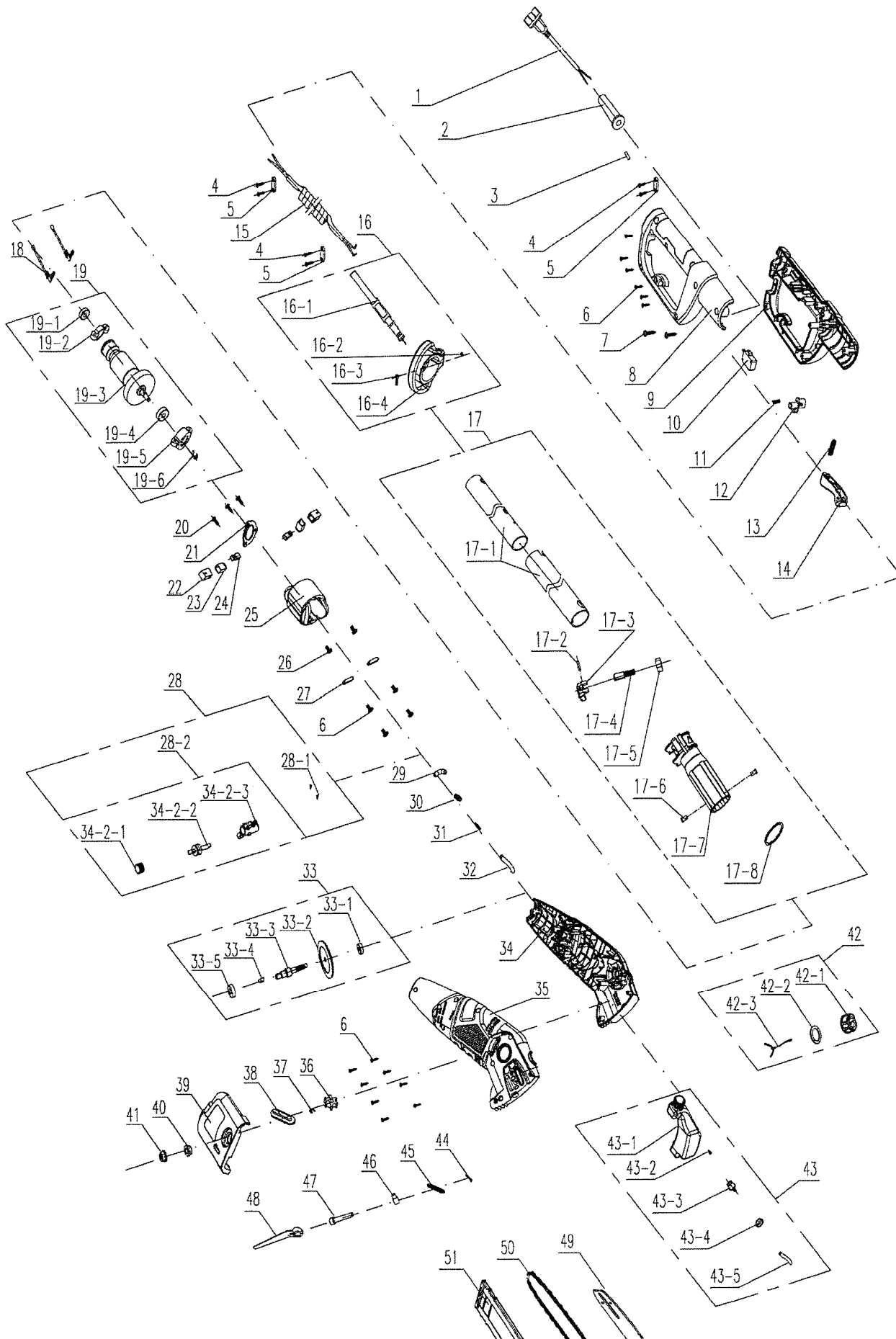
---

# Electric Pole Saw

Operator's manual  
Model: CSPE6.5-M



# PARTS



## PARTS LIST

No.	Part #	Description
1	203002000015	Cable/Plug
2	207099900006	Cable sheath
3	301200005	Heat shrinkable tube
4	207310100041	Self tapping screw
5	207089900001	Cable clamp
6	8SJAB40-14D	Self tapping screw
7	207310100073	Self tapping screw
8	202024002424	Right handle
9	202024002423	Left handle
10	207180800008	Control switch
11	207019900024	Anti lock button spring
12	202003001777	Lock off button
13	207019900315	Switch spring
14	202003001776	Switch button
15	207039900469	Spring connection
16	199007000045	Backband Ring Component
16-1	208008000004	Backband
16-2	207320100008	Nut
16-3	207310100704	Screw
16-4	202040000031	Backband Ring
17	199060000507	Tube assembly
17-1	199060000347	Tube assembly
17-2	207199900054	Cylindrical pin
17-3	202026000219	Adjust the button
17-4	207229900169	Quick clamping adjusting bolt
17-5	207320100050	Lock nut
17-6	207199900110	Fixed pin
17-7	202031000164	Connecting bracket
17-8	207269900014	Big Split washer
18	207039900040	Carbon brush connection wire
19	199133000044	Rotor component
19-1	207390100018	Bearing 607
19-2	202032000013	Bearing sleeve
19-3	106001000088	Rotor assembly
19-4	207390100069	Bearing 6000
19-5	202032000015	Bearing sleeve
19-6	207340100049	Split washer
20	207310100148	Countersunk head tapping screws
21	201057000095	Bearing Pressure plate
22	207129900022	Bushing
23	207119900044	Carbon brush
24	202016002615	Brush shell
25	107001000061	Stator
26	207310100022	Self tapping screw

No.	Part #	Description
27	299999000054	Pressure plate
28	199010000040	Oil pump assembly
28-1	207310100324	Flange tapping screw
28-2	199010000147	Oil pump assembly
28-2-1	202001000002	worm gear
28-2-2	201004000103	Worm gear tooth
28-2-3	202999001599	Pump body
29	202019000177	Rubber joint
30	202019000171	Pipe connection connector
31	207019900001	Tubing setting spring
32	302000002	Transparent oil tube
33	199101000045	Output shaft assy
33-1	207390100011	Bearing 606
33-2	201004000091	Big gear
33-3	201999000724	Woodruff key
33-4	201025000118	Output shaft
33-4	207390100180	Bearing 6900
34	202016003791	Left housing
35	202016003790	Right housing
36	201035000003	Sprocket
37	207340100049	Split washer
38	207279900043	End cap seal ring
39	202011000543	End cover
40	207289900054	Axle sleeve
41	207320100061	Hexagon flange nut
42	199123000363	Oil box cap assy
42-1	202165000571	Oil box cap
42-2	207279900031	Oil box cap seal rings
42-3	202014000001	Prevent loss hook
43	199124000015	Oil box assembly
43-1	202164000013	Oil box
43-2	202074000003	Valve
43-3	199071000126	Oil-out connector assembly
43-4	207279900050	Oil outlet sealing ring
43-5	302000000	Transparent oil tube
44	207019900002	Tubing setting spring
45	207279900050	Oil outlet sealing ring
46	207169900011	Tighten the nut
47	207229900133	Tighten the screws
48	207179900012	Spanner
49	202009000201	Knife set
50	205001000003	Chain
51	205001000090	Chain board